

Mapping to a Network Drive

UNC Lineberger

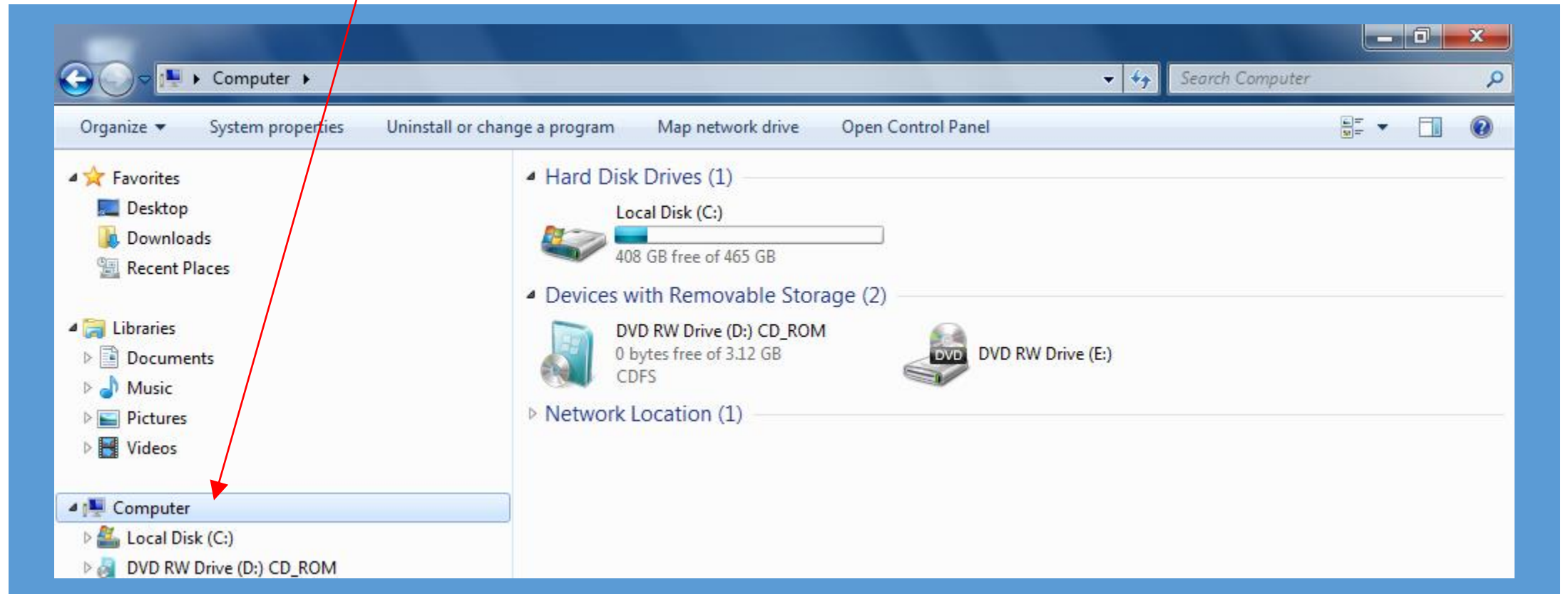
IT Support

For Windows Users

(Mac Users on Slide 10)

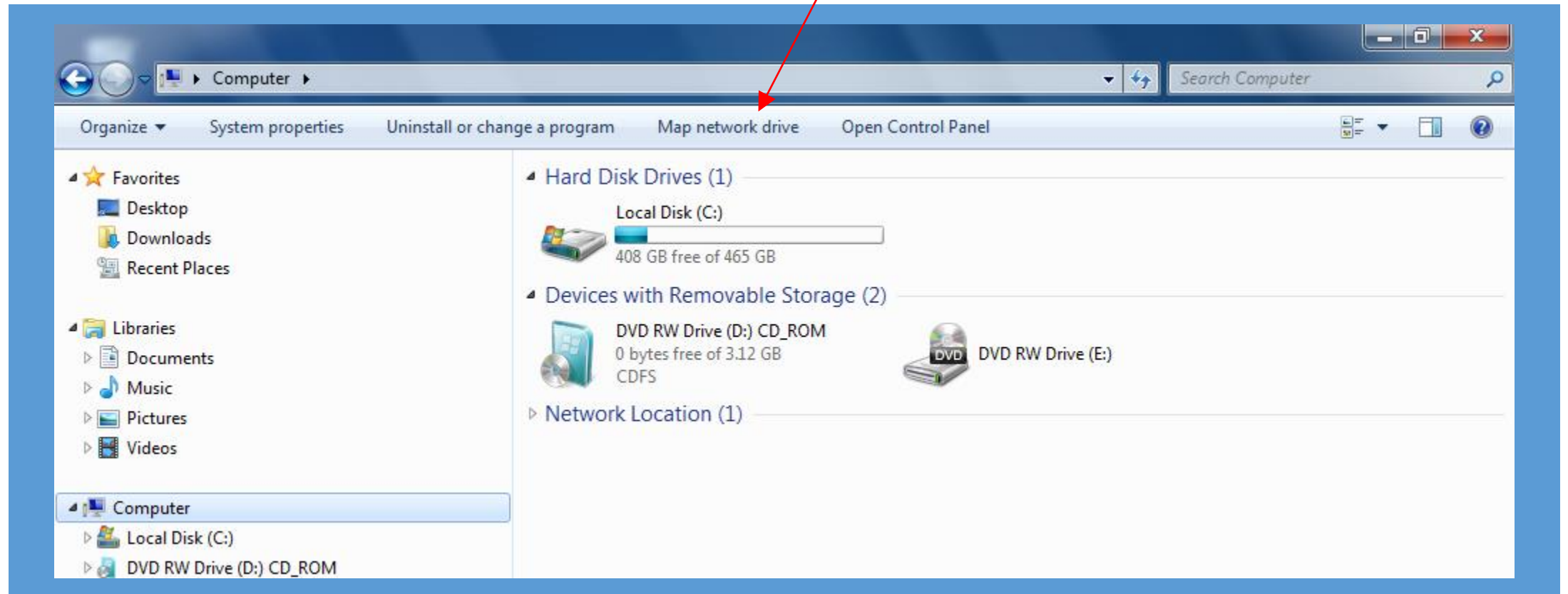
Step 1:

- Open a Windows Explorer window and select *Computer* in the left pane.



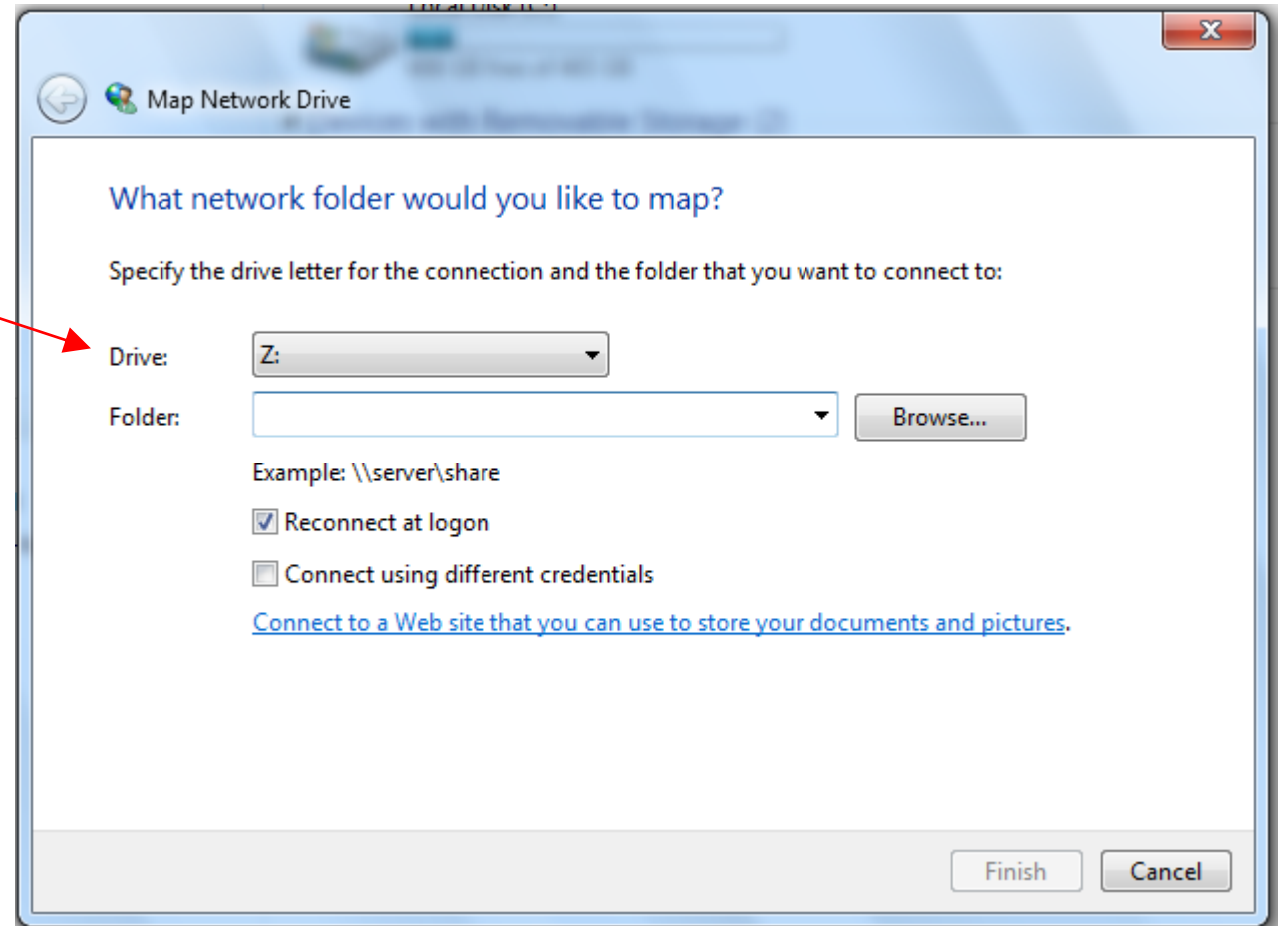
Step 2:

- Click on the *Map network drive* option.



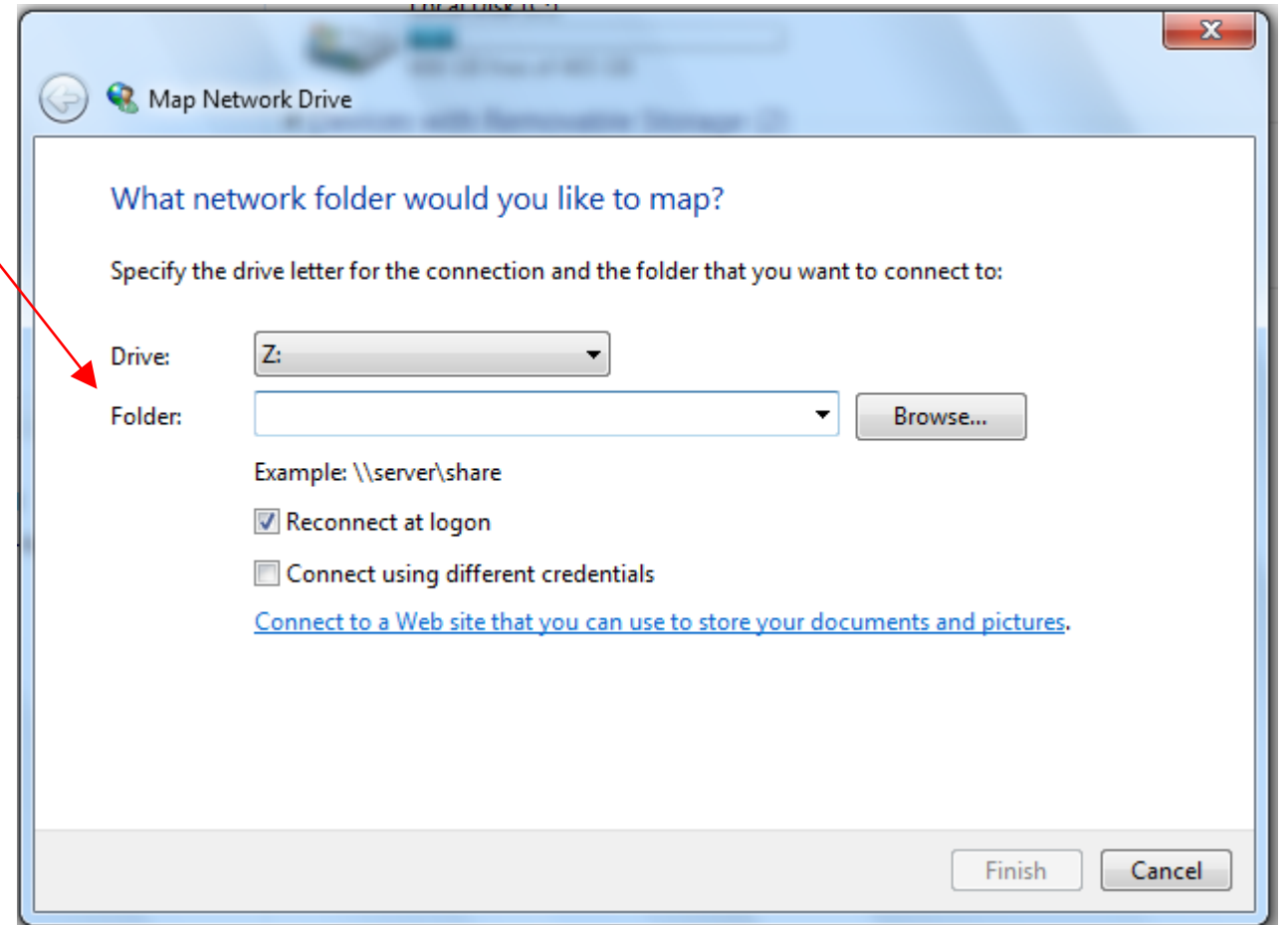
Step 3:

- A dialog box will open. Select the drive letter you want to map.



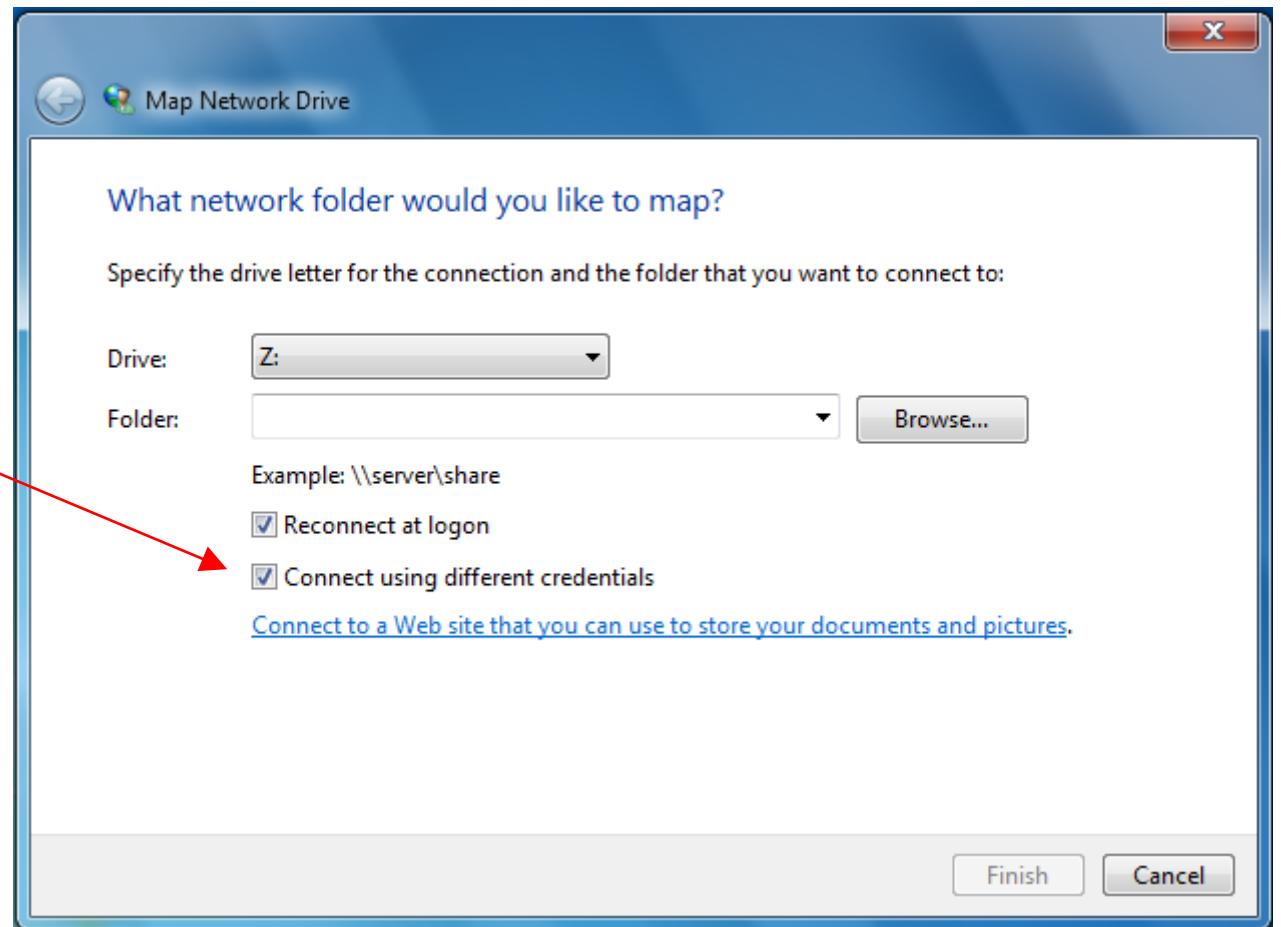
Step 4:

- Input the drive path you are mapping to in the next box.
- Below is a list of drive paths for the LCCC network:
 - <\\ad.unc.edu\lccc\labs-home\YourLabName>
 - <\\ad.unc.edu\lccc\labs-groups\YourGroupName>
 - <\\ad.unc.edu\lccc\labs-shared>



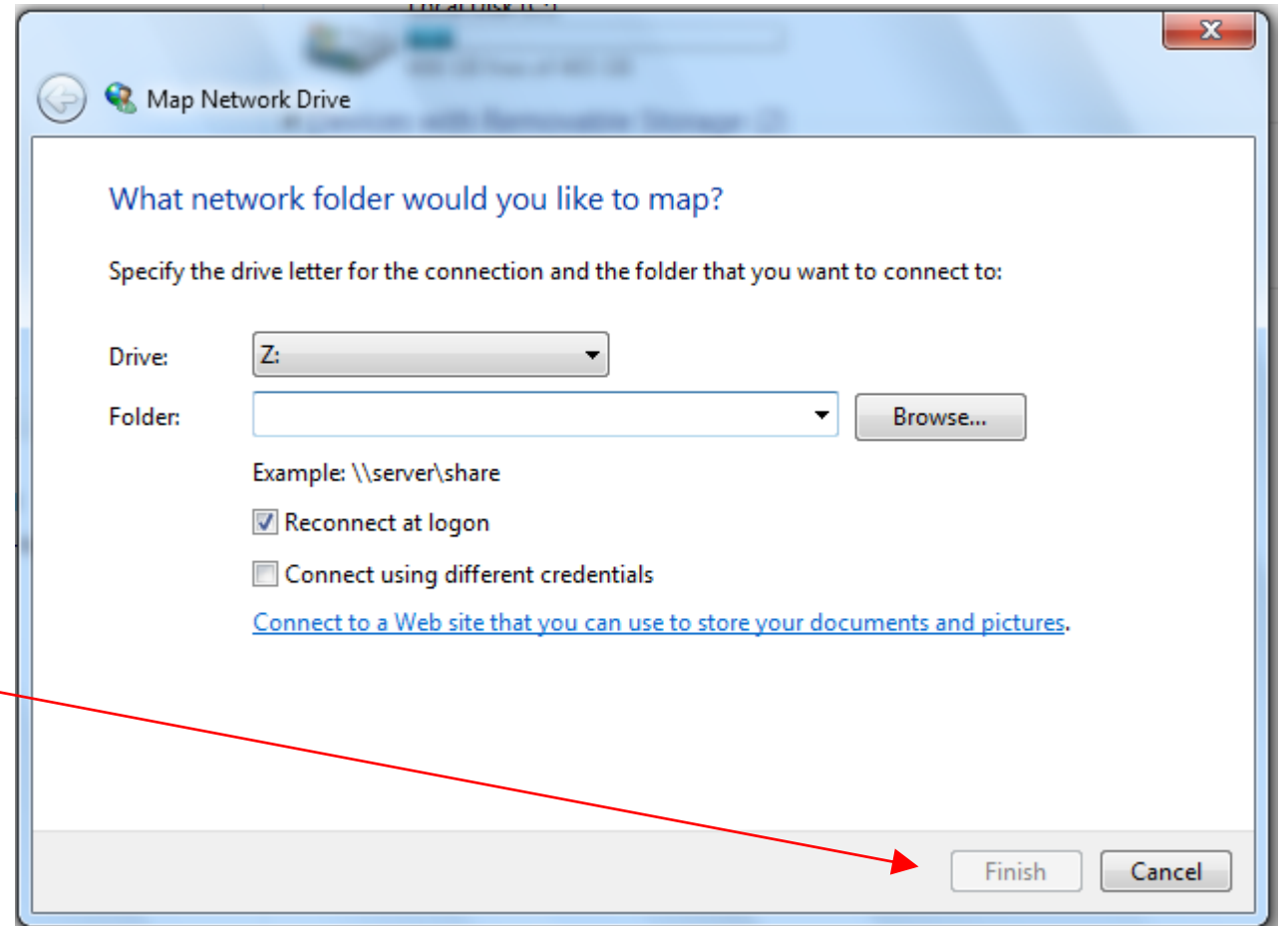
Step 5:

- If you are using a laptop or a local (personal) login, select the *Connect using different credentials* checkbox.



Step 6:

- Click *Finish* when complete.



Step 7:

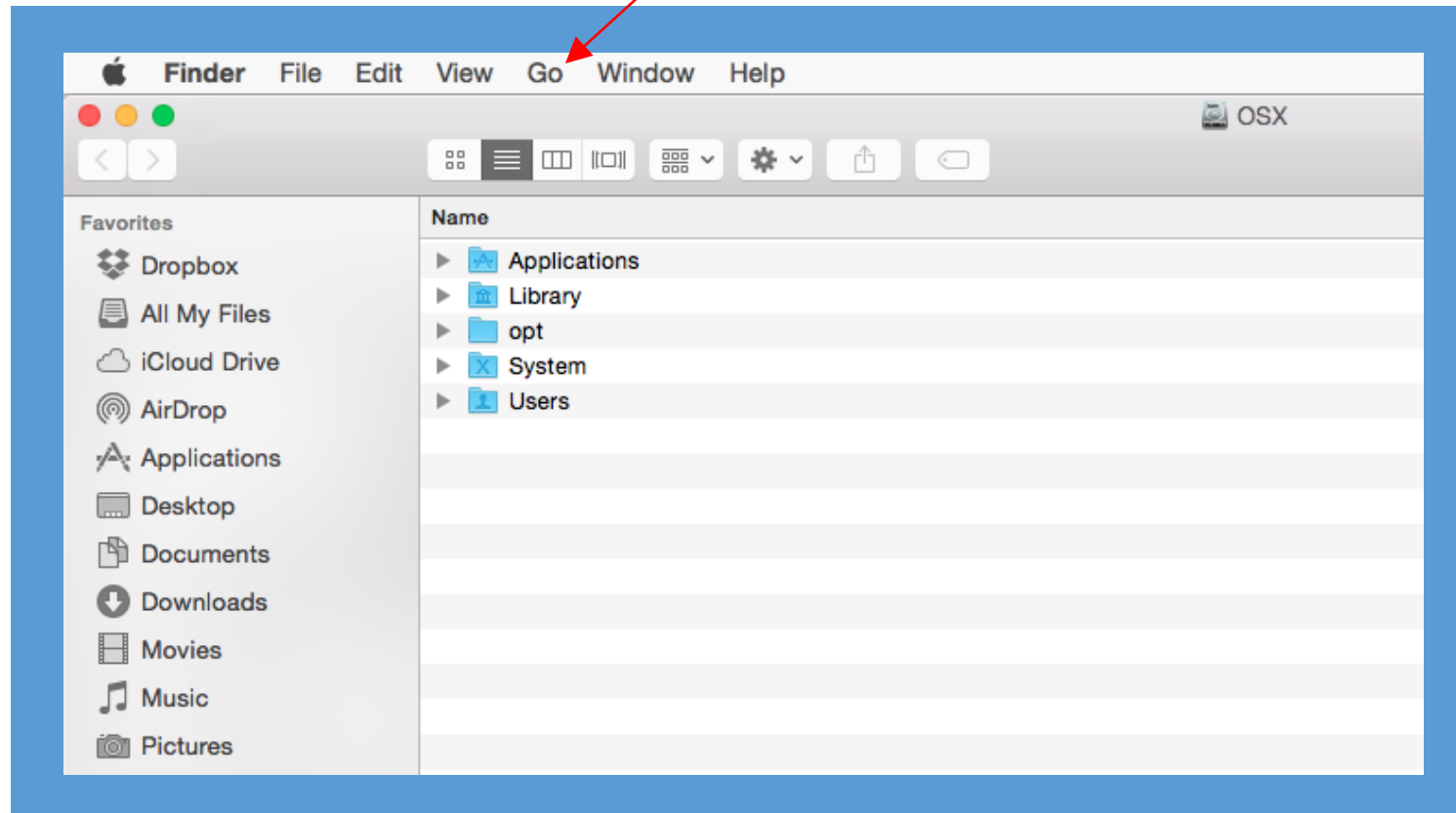
- If you selected *Connect using different credentials* in Step 5, you will be prompted to enter a Username and Password.
- For the Username, type in *AD\YourOnyen*.
- For the Password, type in your Onyen's password.
- Click *OK* to finish.



For Mac Users

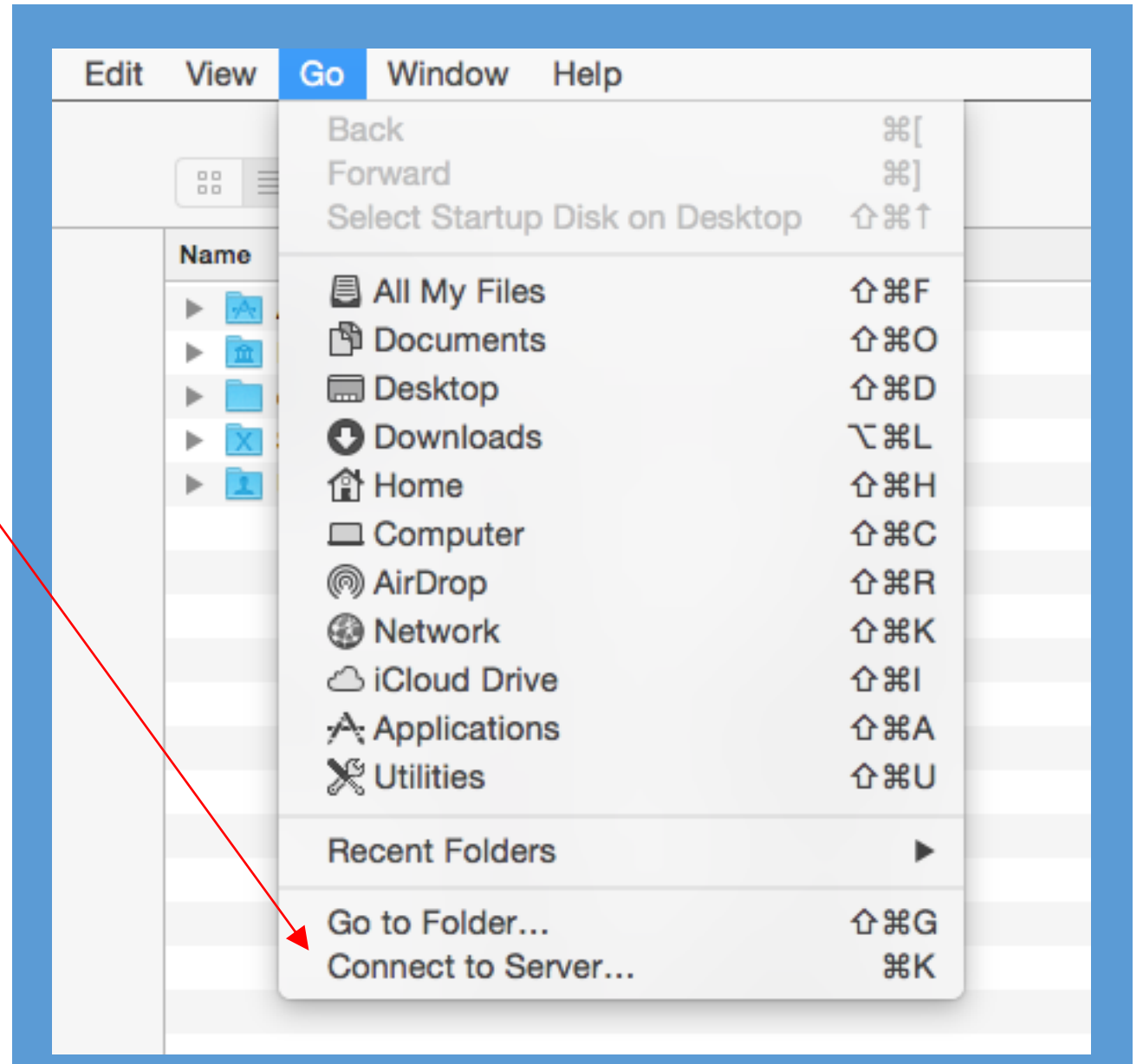
Step 1:

- Open a Finder window and select the *Go* drop-down menu from the toolbar.



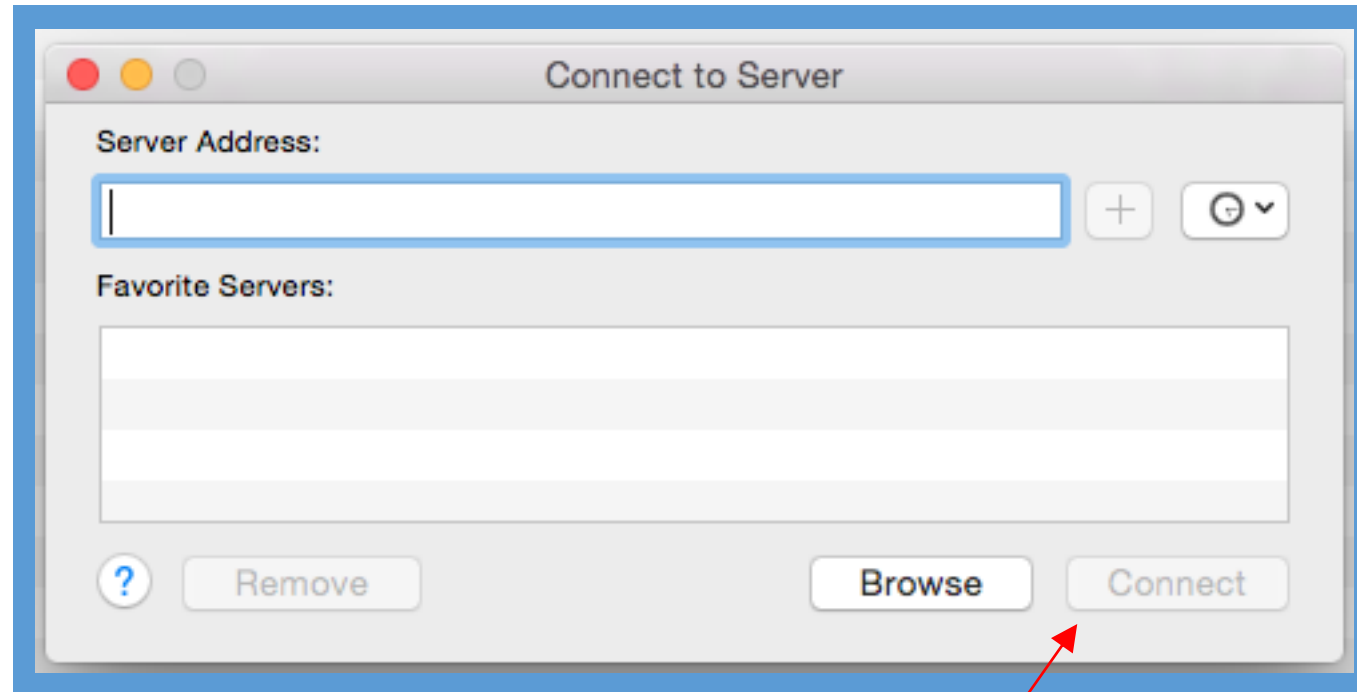
Step 2:

- Select the *Connect to Server* option from the drop-down menu.



Step 3:

- Input the drive path you are mapping to in the *Server Address* box.
- Type the drive path in this format:
<cifs://ad.unc.edu/lccc/labs-home/YourLabName>
- Click *Connect* when finished.



Step 4:

- A dialog box will open asking for a name and password.
- Type in your Onyen for *Name*, and your Onyen password for *Password*.
- Click *Connect* to finish.

