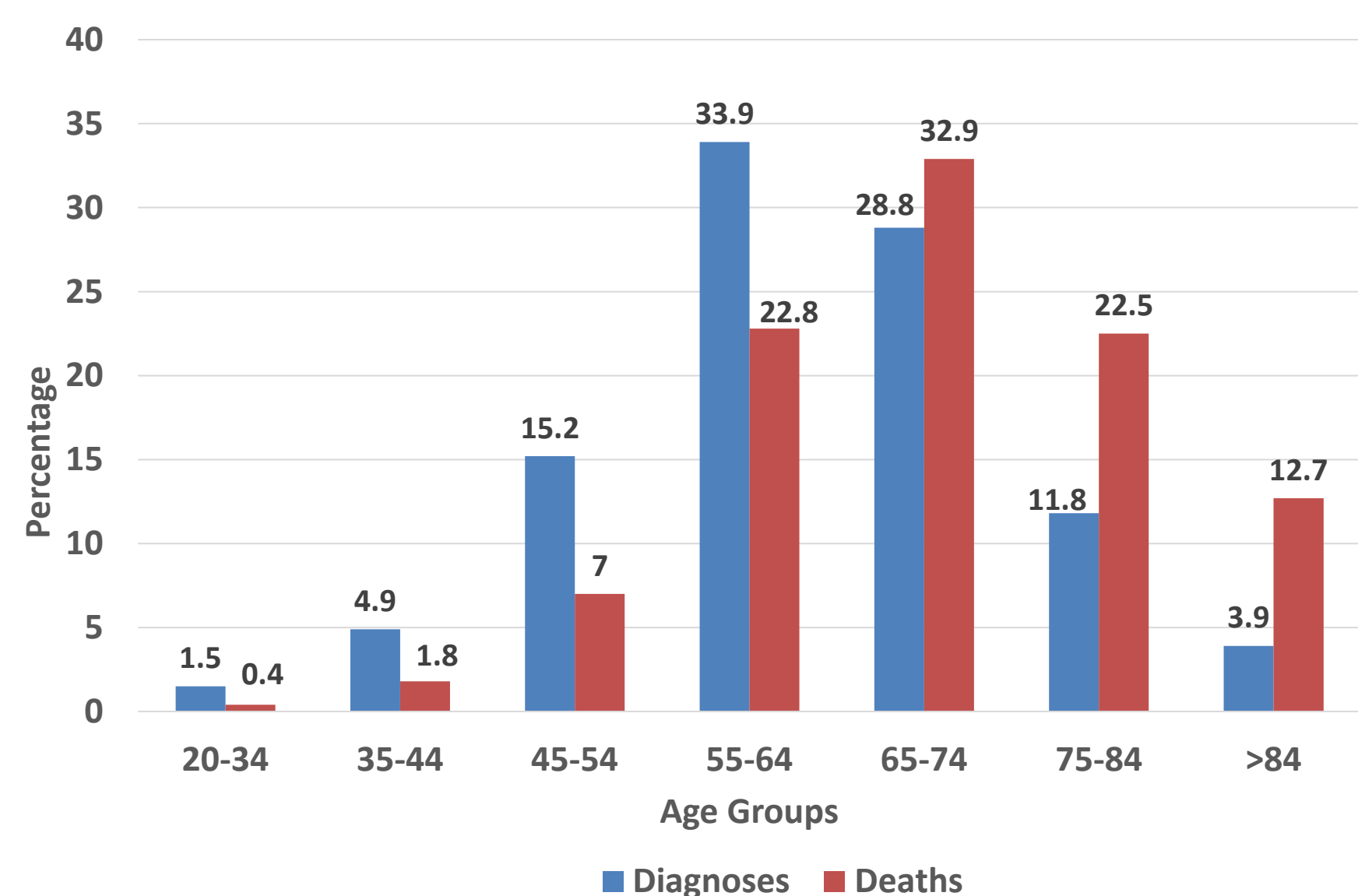


Background



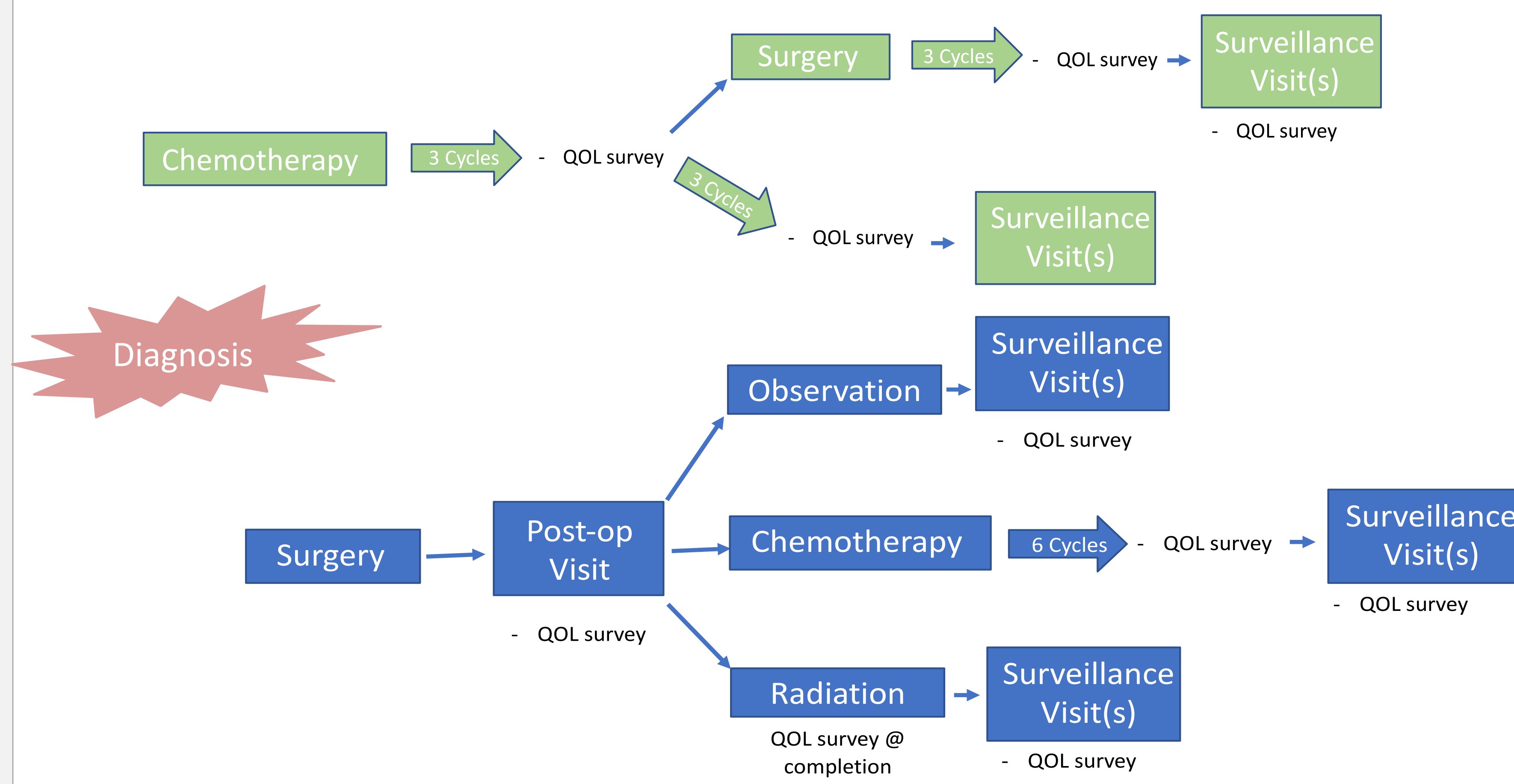
TYPE I (80-85%)	TYPE II (10-15%)
Estrogen dependent	Non-estrogen dependent
Endometrioid, Gr 1-2	Endometrioid, Gr 3 Serous Clear cell
Slow-growing, good prognosis	Aggressive, poor prognosis

Objectives

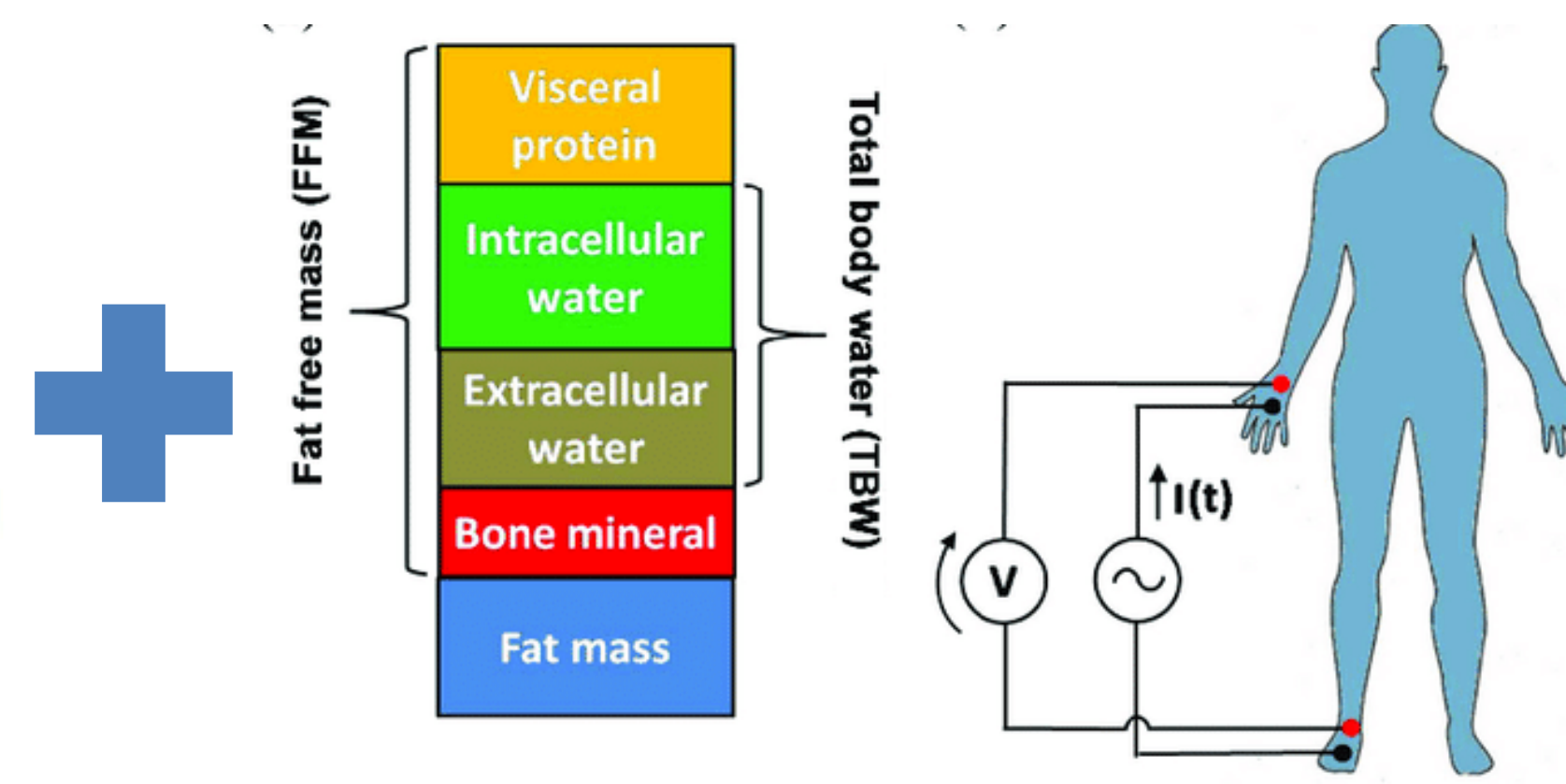
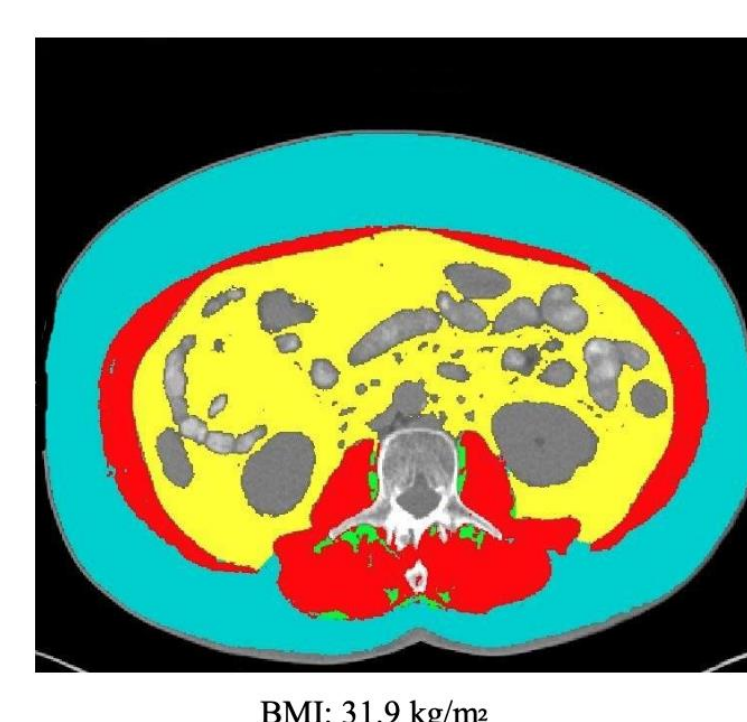
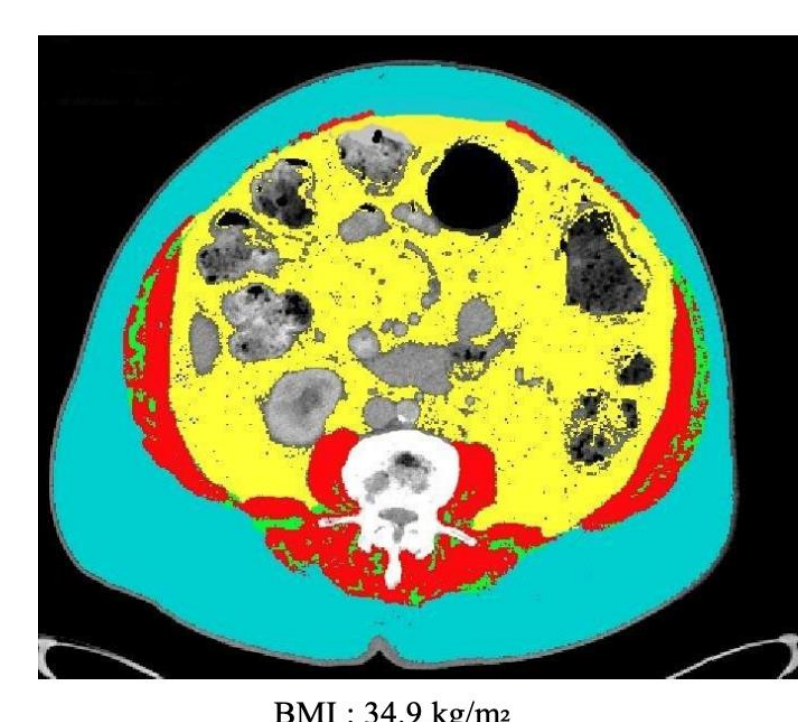
- We will assess the association of bioimpedance analyses (BIA) of sarcopenia with CT measurements of skeletal muscle density (SMD) in endometrial cancer patients. BIA and SMD data will be correlated with frailty.
- Treatment tolerance and response, quality of life, and surgical outcomes will be compared in patients <60 years of age compared to 60 years and older.
- We hypothesize that SMD will correlate with frailty, and frail patients will have worse treatment tolerance and outcomes.

Study Design and Methods

- Target accrual for this study is 100 patients with new diagnoses of Type I or Type II endometrial cancer.
- We will follow patients prospectively through surgery and adjuvant therapies and catalogue post-operative complications, chemotherapy toxicities, progression free and overall survivals.



Quality of Life	Function
Patient-reported CTCAE	Timed Up and Go
Endometrial Quality of Life - EORTC	Karnofsky Performance Status
PROMIS Quality of Life Measures	Patient-reported parameters



References

- SEER Stat Facts Endometrial Cancer. SEER 18 2010–2016, All Races, Females by SEER Summary Stage 2000
- Alexio GFP, Deal AM, Nyrop KA et al. Association of body composition with function in women with early breast cancer. Breast Cancer Research and Treatment (2020) 181:411–421
- Guerard EJ, Deal AM, Chang Y, et al. Frailty Index Developed From a Cancer-Specific Geriatric Assessment and the Association With Mortality Among Older Adults With Cancer. J Natl Compr Canc Netw. 2017;15(7):894-902.
- Dueck AC, Mendoza TR, Mitchell SA, et al. Validity and Reliability of the US National Cancer Institute's Patient-Reported Outcomes Version of the Common Terminology Criteria for Adverse Events (PRO-CTCAE). JAMA oncology. Nov 2015;1(8):1051-1059.
- Greimel E, Nordin A, Lanceley A, et al. Psychometric validation of the European Organisation for Research and Treatment of Cancer Quality of Life Questionnaire-Endometrial Cancer Module (EORTC QLQ-EN24) Eur. J Cancer (2010), doi:10.1016/j.ejca.2010.08.014