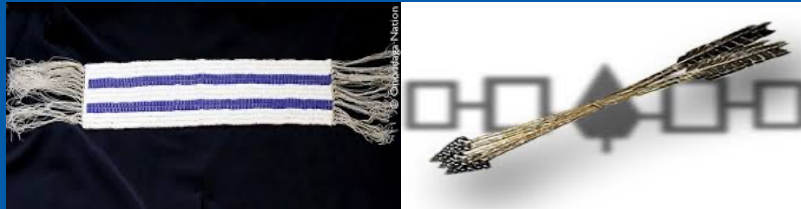


Building Cancer Care Collaboratives for the Seventh Generation



Rodney C. Haring, PhD, MSW
Seneca/Beaver Clan
Roswell Park Center for Indigenous Cancer Research

1

Virtual Land Acknowledgment

Virtually, we acknowledge our respective Indigenous landscapes and the ancestral lands in we sit . To recognize the land is an expression of gratitude, appreciation, and a way of honoring the Indigenous peoples of past, present, and future.

ROSWELL PARK COMPREHENSIVE CANCER CENTER

2

Disclosure: Financial Relationship

- Bristol Meyers Squibb Foundation
Role: Co-PI/Grant

ROSWELL PARK COMPREHENSIVE CANCER CENTER

3

Objectives

- Attendees will learn how to utilize and discuss treaty conversations in cancer care through Native Nation, to Cancer Center, to Federal relationships including collaboratives with adjacent rural, suburban, and urban intersections.
- Attendees will conceptualize how to build culturally congruent practices of quality improvement round tables, program evaluation, and research programming towards Native Nation beneficence.
- Attendees will practice dream storming towards co-creating sustainable cancer care collectives towards healthy generations.

ROSWELL PARK COMPREHENSIVE CANCER CENTER

4

Center for Indigenous Cancer Research

Mission
MoU
Outreach
Education
Research
Patient Care

Working together—not competitively but collaboratively for the health of future generations (bundled-arrows approach) creates opportunities to braid treaty conversations, tribal/federal/state/county programs and area offices of IHS for the health and wellness of all peoples.



ROSWELL PARK COMPREHENSIVE CANCER CENTER

5

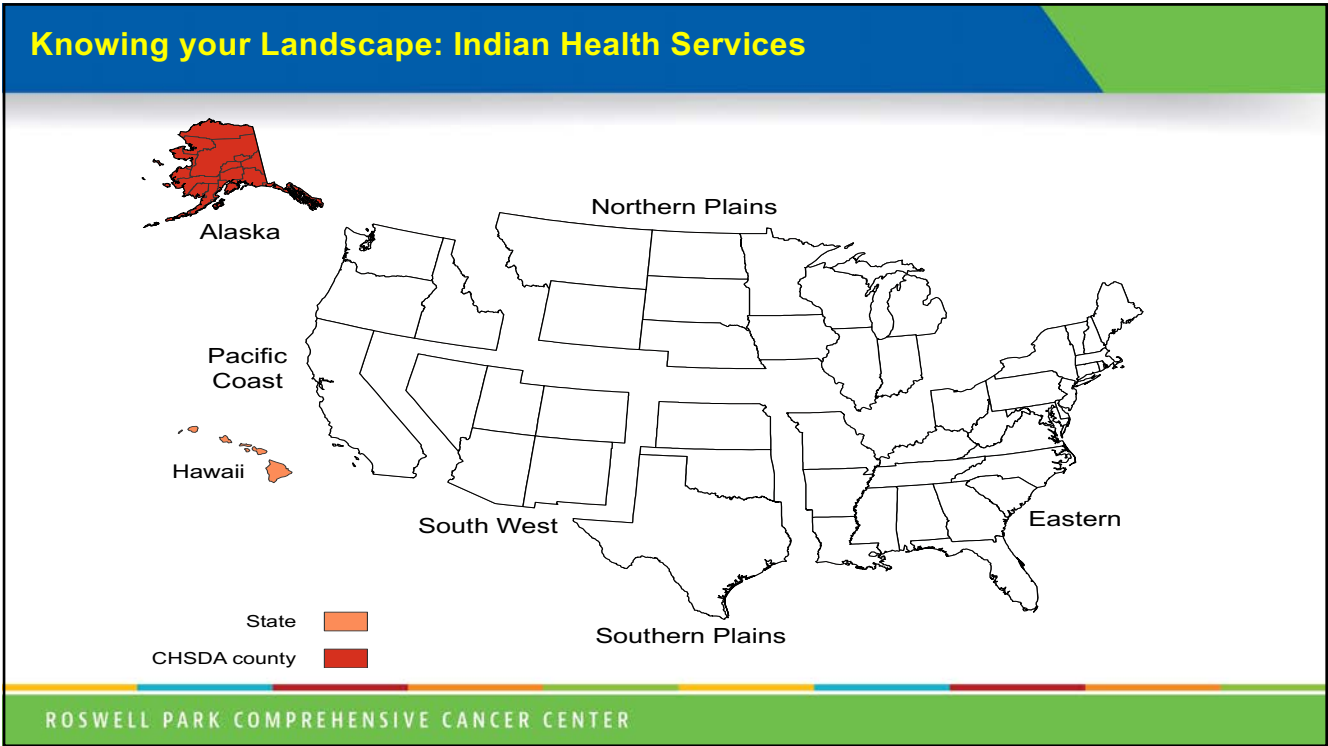
Knowing your Landscape: Indian Country/NCI Comprehensive Cancer Centers

Image Credit: Whitney Ann E. Henry

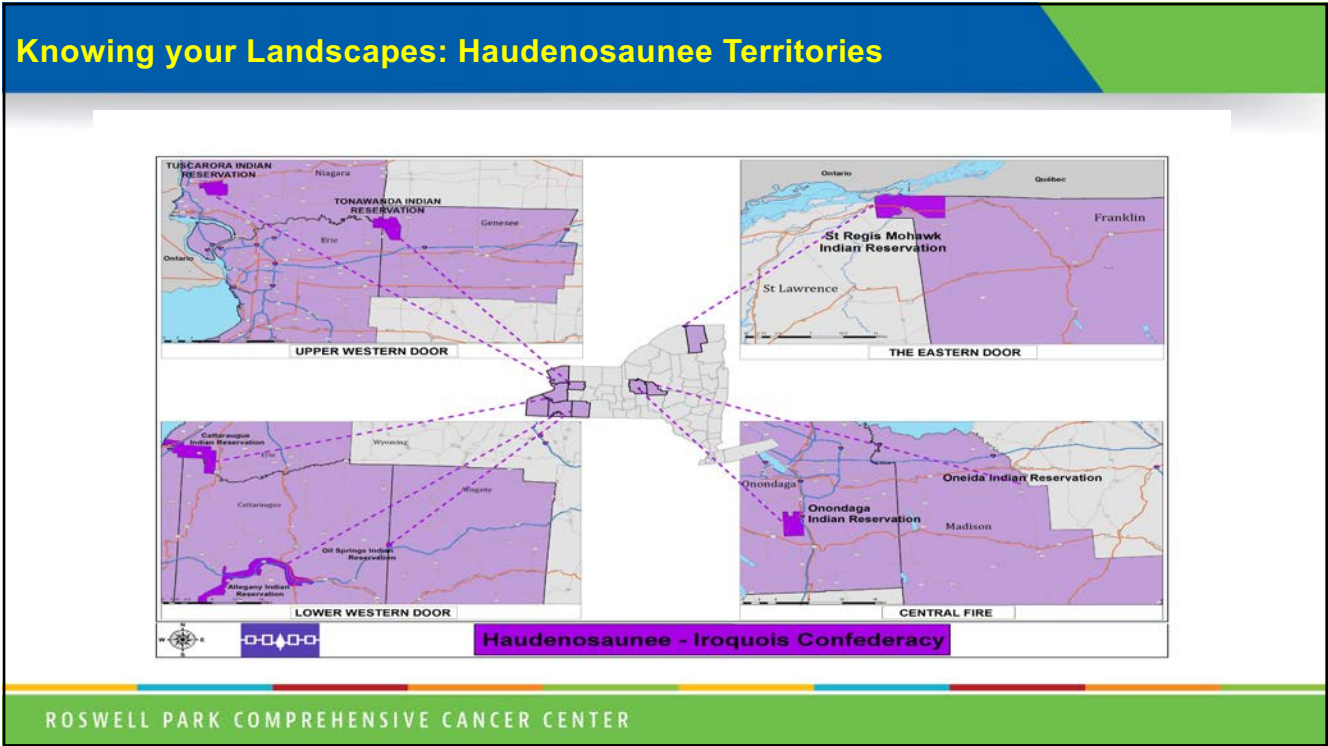


ROSWELL PARK COMPREHENSIVE CANCER CENTER

6



7



8

Knowing your Landscapes: Data

- Statically significant differences between Haudenosaunee and NHW:
- Deaths related to accidents were over 2 times higher.
- Deaths related to diabetes were over 3 ½ time higher.
- Deaths related to chronic liver disease was 4 times higher.
- Cancer was the second leading cause of death and higher than previously recorded for the “East”.

RESEARCH

Mortality disparities: A comparison with the Haudenosaunee in New York State

Rodney C. Haring¹, Melissa A. Jim², Deborah Erwin³, Judith Kaur⁴, Whitney Ann E. Henry⁵, Marissa L. Haring⁶, Dean S. Seneca⁷

¹Office of Community Outreach and Engagement, Department of Cancer Prevention and Control, Roswell Park Comprehensive Cancer Center, Buffalo, NY ²Division of Cancer Prevention and Control, National Center for Chronic Disease Prevention and Health Promotion, Centers for Disease Control and Prevention, Albuquerque, NM ³Office of Community Outreach and Engagement, Department of Cancer Prevention and Control, Roswell Park Comprehensive Cancer Center, Buffalo, NY ⁴Mayo Clinic, Jacksonville, FL ⁵Office of Community Outreach and Engagement, Department of Cancer Prevention and Control, Roswell Park Comprehensive Cancer Center, Buffalo, NY ⁶Student Research Experience Program in Cancer Science, Department of Educational Affairs, Roswell Park Comprehensive Cancer Center, Buffalo, NY ⁷Partnership Support Unit, Office for State, Tribal, Local and Territorial Support, Centers for Disease Control and Prevention, Atlanta, GA

*Corresponding author email: rodney.haring@roswellpark.org

ROSWELL PARK COMPREHENSIVE CANCER CENTER

9

Knowing your Landscape: Two-Row and the Cancer Care Continuum/CBPR

- QI Macro-level round-tables with Area Native Nations
- QI Macro-level round-tables with adjacent rural providers, safety-net areas (qualitative analysis, report, video)
- 1:1 interviews for film footage/working with tribal media teams (building Cancer Center to Nation contracts)
- Creating short documentaries for dissemination (Cancer center media and tribes)
- Collaborating with Indigenous/inter-tribal CAB (quarterly)
- Two-Row Cancer Care Continuum -
<https://www.youtube.com/watch?v=ysQ0i2FODkQ>

ROSWELL PARK COMPREHENSIVE CANCER CENTER

10

Research

- Time releases for Indigenous CBPR, outreach, education.
- Clinical time release if in the clinical context.
- Encouragement of staff professional research development via conference presentation and networking, joining government committees, grant reviews, and being journal reviewers.

ROSWELL PARK COMPREHENSIVE CANCER CENTER

11

Outreach

Indigenous outreach/health educator for CBPR on campus and in the communities (rural, sub-urban, urban, and tribal).

Connect with cancer center media and marketing teams to contract for agreements with tribal media and social media to promote collaboratives, projects, and health messaging

Quarterly newsletter, pod casts, cancer center Indigenous social media

Indigenous project branding on campus and for the communities.

Indigenous spaces on campus.

Native CIRCLE – Roswell Park/Mayo Clinic Resource

Spirit of EAGLES – Joint Conference (pre-pandemic)

ROSWELL PARK COMPREHENSIVE CANCER CENTER

12

Education

- Build out process for inclusion for Indigenous internships with tribes and within your cancer center.
- Build out collaborative internships with other internal departments.
- MoU building for educational programming with Native Nation Education teams.
- Post-Doc: Supported through education; spot held for one Indigenous Post-Doc.
- Create travel scholarship opportunities for Indigenous youth, undergraduate and graduate students to apply for conference travel.

ROSWELL PARK COMPREHENSIVE CANCER CENTER

13

Clinical Advisor (center to community)



ROSWELL PARK COMPREHENSIVE CANCER CENTER

14

Indigenous Advisory Council

Importance of community advisory boards at the dept/center level (micro/mezzo)

Community advisory boards at the institution level (macro)

ROSWELL PARK COMPREHENSIVE CANCER CENTER

15

Cohesion & Team Building

- Weekly staff meetings (virtual; hybrid)
- Quarterly Indigenous CAB meeting
- Quarterly team building events (i.e., horseback riding, fishing, paddling, beading, lacrosse games)
- Invite nationally recognized speakers to present at greater campus on Indigenous research (quarterly)
- Mentoring (self, diversity in mentors, being a mentor to others)

ROSWELL PARK COMPREHENSIVE CANCER CENTER

16

Two Row Wampum – Gä•sweñta'



The Haudenosaunee and the Dutch and later the French, English and Canada—agreed on three principles to make this treaty last. The first was friendship; the Haudenosaunee and their white brothers will live in friendship. The second principle is peace; there will be peace between their two people. The final principle is forever; that this agreement will last forever.

Source: <https://rothinoshonionhwetkanatahere.wordpress.com/untold-history/covenants/two-row-wampum/>

ROSWELL PARK COMPREHENSIVE CANCER CENTER

17

Foreign Affairs & Government Relations

Community and tribal affairs liaison (i.e., cancer center government affairs)

Incorporating treaty language in grants, cancer center responsibilities.

UN Declaration on Indigenous Human Rights



ROSWELL PARK COMPREHENSIVE CANCER CENTER

18

Creating sponsors/donors for sustainability

- Not-for-profit arm for sponsorship, donors and fundraising to help sustain Indigenous programming (i.e., endowments)

ROSWELL PARK COMPREHENSIVE CANCER CENTER

19

International Associates

01

Supports international research collaborations and opportunities.

02

Supports educational exchange.

03

Encourage crossing-border initiatives when tribes are ancestrally related.

ROSWELL PARK COMPREHENSIVE CANCER CENTER

20

7th Generation

Multi-disciplinary sciences (IK/Western/and disciplines) are needed going forward related to Indigenous peoples.

Looking beyond the US to global knowledges are important practices and keeping an open mind on how these can translate or be implemented or disseminated in team science.

Building sustainable CBPR(eval/QI/research) plans for sustainable benefits for the next seven generation.



ROSWELL PARK COMPREHENSIVE CANCER CENTER

21

Summary

- Compare/contrast cancer center strategic plans & how it will include Indigenous initiatives.
- Team work to create a strategic and sustainable planning with a “good mind” that looks forward seven generations and is reflective of the UN Declaration of the Rights of Indigenous People
- Evaluation of efforts in Indigenous communities at the macro level for the cancer center and for tribes.

ROSWELL PARK COMPREHENSIVE CANCER CENTER

22

Contact Information



Rodney C. Haring, PhD, MSW
Roswell Park Comprehensive Cancer Center
Center for Indigenous Cancer Research
rodney.haring@roswellpark.org

ROSWELL PARK COMPREHENSIVE CANCER CENTER

23