

Sound Check

03:55

Start Time

04:00

Contact UNCLCN

Phone: (919) 445-1000
 Email: unclcn@unc.edu
 Website: unclcn.org

Poll Everywhere for Q&A
pollev.com/unclcn

Upcoming Live Webinars
learn.unclcn.org/live

For technical difficulties
 (919) 445-1000
unclcn@unc.edu

Advanced Practice Provider webinars created and coordinated by Tammy Tabor, ONA/NAC/ACONS, in partnership with UNC Lineberger Cancer Network

This program co-sponsored with UNC Digital and Lifelong Learning

1

POLL EVERYWHERE

Join by Web

- Go to PollEv.com
- Enter UNCLCN
- Respond to activity

2

TO CLAIM CE CREDIT

Participants must attend using one of the following:

- Zoom with the slides and video components
- At a designated site with a site coordinator

The following do NOT qualify for CE credit:

- Joining Zoom using Phone audio only
(using the Zoom Android or iPhone app is fine)
- Watching with MediaSite

To claim CE credit


- View 50 minutes or more
- Fill out an evaluation and select a certificate
- Claim credit within seven days

3

AFTER THE WEBINAR

**To collect CE Credit,
please wait for UNCLCN
to end the Zoom video.**

**The Learning Portal only
receives Zoom attendance data
after the Zoom video has ended.**



4

CONTINUING EDUCATION CREDITS

FREE CE Credits with Live Webinars

Only Available at the Day and Time Indicated

PATIENT CENTERED CARE	ADVANCED PRACTICE PROVIDER
2nd Wednesday Jan-Oct 1st Wednesday Nov-Dec 12 pm – 1 pm	3rd Wednesday Jan-Oct 2nd Wednesday Nov-Dec 4 pm – 5 pm
RESEARCH TO PRACTICE 4th Wednesday Jan-Oct 3rd Wednesday Nov-Dec 12 pm – 1 pm	SOUTHEASTERN AMERICAN INDIAN CANCER HEALTH EQUITY PARTNERSHIP 1st Wednesday Feb, May, Nov 12 pm – 1 pm

FREE CE Credits with Self-Paced, Online Courses

Available any Day and Time

learn.unclcn.org


5

UNC Lineberger Cancer Network

ADVANCED PRACTICE PROVIDER

April 19, 2023


Parenting with Cancer



Justin Michael Yopp, PhD

6

OUR PRESENTER



Justin Michael Yopp,
PhD

Justin Yopp, PhD, is a clinical psychologist and Assistant Professor in the Department of Psychiatry at UNC. He serves as Program Director for the UNC Comprehensive Cancer Support Program at the North Carolina Cancer Hospital where he provides psychotherapeutic services for children, adolescents, and adults impacted by cancer.

Dr. Yopp co-leads the Parenting with Cancer Clinic at UNC. He also co-leads the Widowed Parent Project and co-authored the book, *The Group: Seven Widowed Fathers Reimagine Life*, published by Oxford University Press.

7

OUR PRESENTER

8

OUR PRESENTER

5. Co-leads the Widowed Parent Project and co-authored the book, *The Group: Seven Widowed Fathers Reimagine Life*, published by Oxford University Press.

9

OUR PRESENTER

5. Co-leads the Widowed Parent Project and co-authored the book, *The Group: Seven Widowed Fathers Reimagine Life*, published by Oxford University Press.

4. Co-leads the Parenting with Cancer Clinic at UNC.

10

OUR PRESENTER

- Co-leads the Widowed Parent Project and co-authored the book, *The Group: Seven Widowed Fathers Reimagine Life*, published by Oxford University Press.
- Co-leads the Parenting with Cancer Clinic at UNC.
- Provides psychotherapeutic services for children, adolescents, and adults impacted by cancer.

11

OUR PRESENTER

- Co-leads the Widowed Parent Project and co-authored the book, *The Group: Seven Widowed Fathers Reimagine Life*, published by Oxford University Press.
- Co-leads the Parenting with Cancer Clinic at UNC.
- Provides psychotherapeutic services for children, adolescents, and adults impacted by cancer.
- Program Director for the UNC Comprehensive Cancer Support Program at the North Carolina Cancer Hospital.

12

OUR PRESENTER

5. Co-leads the Widowed Parent Project and co-authored the book, *The Group: Seven Widowed Fathers Reimagine Life*, published by Oxford University Press.
4. Co-leads the Parenting with Cancer Clinic at UNC.
3. Provides psychotherapeutic services for children, adolescents, and adults impacted by cancer.
2. Program Director for the UNC Comprehensive Cancer Support Program at the North Carolina Cancer Hospital.
1. Clinical psychologist and Assistant Professor in the Department of Psychiatry at UNC.

13

Respond at PollEv.com/uncn

Text UNCLCN to 22333 once to join, then text your message

What one word comes to mind when you hear the sentence "Parenting with cancer"?

➤ No responses received yet. They will appear here...

Powered by Poll Everywhere

14

DISCLOSURES

This activity has been planned and implemented under the sole supervision of the Course Director, William A. Wood, MD, MPH, in association with the UNC Office of Continuing Professional Development (CPD). The course director and CPD staff have no relevant financial relationships with ineligible companies as defined by the ACCME.

The University of North Carolina at Chapel Hill is accredited with distinction as a provider of nursing continuing professional development by the American Nurses Credentialing Center's Commission on Accreditation.

A potential conflict of interest occurs when an individual has an opportunity to affect educational content about health-care products or services of a commercial interest with which he/she has a financial relationship. The speakers and planners of this learning activity have not disclosed any relevant financial relationships with any commercial interests pertaining to this activity.

15

**What one word comes to mind when you
hear the sentence "Parenting with cancer"?**

16

Parenting with Cancer

Justin M. Yopp, PhD
Associate Professor, Department of Psychiatry
Program Director, Comprehensive Cancer
Support Program
University of North Carolina at Chapel Hill

17

Why Parents?

- Affects an entire family
- Increased risk for depression, anxiety;
disruption to family roles & routines
(Nilsson et al., 2009; Semple et al., 2010)
- Impacts treatment decision-making
(Check et al., 2017)
- Alters children's life trajectories

18

Across the Illness Continuum

- Diagnosis | Recurrence
- During Treatment
- Parents with Advanced Cancer
- End-of-Life

19



Location
Location
Location

20

Communication
Communication
Communication

21

At Diagnosis (or Recurrence)

- **To Tell or Not to Tell?**
- Parental instinct to protect
- “What if my children _____?”
- “What if they ask if I’m going to die?”

22

At Diagnosis

© Original Artist
Reproduction rights obtainable from
www.CartoonStock.com



search ID: rfu0269

"You want the truth, the whole truth
or nothing but the truth?"

23

Establishing and Maintaining Trust

24

At Diagnosis

- When: 1st to tell; control the narrative
- What: name it; anticipate changes
- How: model showing emotion
- Encourage questions; start of convo
- Provider's role: empower parents

25

When poll is active, respond at pollev.com/unccln
Text **UNCLCN** to **22333** once to join

UNC LINEBERGER COMPREHENSIVE
CANCER CENTER
UNC Lineberger Cancer Network

**Which of the following should parents
consider when communicating with their
children about cancer?**

Be honest
Name the word 'cancer'
Encourage Questions
All of the above

Powered by **Poll Everywhere**
Start the presentation to see live content. For screen share software, share the entire screen. Get help at pollev.com/app

26

Throughout Treatment

- Two keys for parenting:
 - Emotional availability
 - Maintaining consistency

27

Throughout Treatment: Emotional Availability

- Important → ongoing conversation...
- Update as needed; check-ins
- “How can I tell how my kid is doing?”
 - While driving; laying in bed
 - Mad-Happy-Sad-Thankful game

28

Throughout Treatment: Maintaining Consistency

- The ideal – not reality
- Finding a temporary normal; adapting to shifting roles/responsibilities
- Keep behavioral expectations
- Reassuring to children that not *everything* has changed

29

Throughout Treatment

- Aside from concerns of death, parenting issues are similar among parents with met or non-met cancer (Park et al., 2019)
- Parenting concerns = depression, anxiety, low QOL in parents (Park et al., 2016; Park et al., 2018)

30

Parenting with Advanced Cancer

- Parenting concerns in parents with advanced cancer is associated with depression, anxiety, low QOL

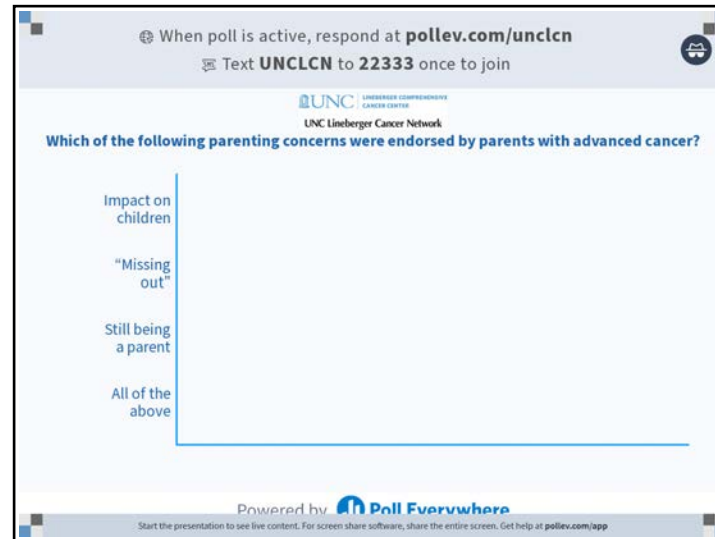
(Park et al., 2016; Park et al., 2018)

31

Parenting with Advanced Cancer

- Four themes: (Park et al., 2017)
 - Concerns about impact on child
 - “missing out”
 - Still being a parent
 - Treatment decision-making

32



33

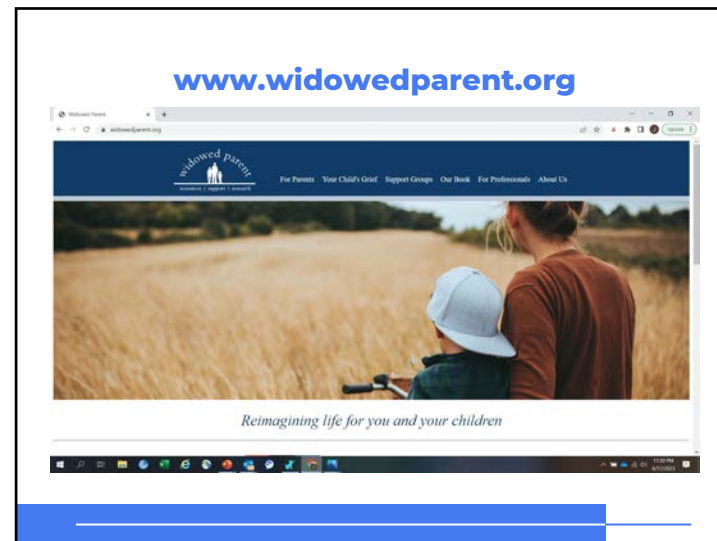
Parenting with Advanced Cancer

- Patients who are parents are more likely to pursue aggressive treatments (Kiebert et al., 1994)
- Maximizing time with children and preserving parental functioning are priorities (Check et al., 2017)

34

Untapped Wisdom

35



36

Widowed Fathers

- Top 4 communication priorities with dying mother: (Park et al, 2017)
 - Raising children in ways that reflect her hopes/values
 - How she wants to be remembered
 - Whether/how to talk with the children about impending death
 - Whether how to talk with children about her death after she dies

37

Widowed Fathers

- Four themes of care delivery: (Park et al, 2015)
 - Clear communication from the medical team (*avoid avoiding*)
 - Earlier prognostic information
 - Specific information about EOL
 - Bedside manner

38

When poll is active, respond at pollev.com/unccln
Text **UNCLCN** to **22333** once to join

UNC LINEBERGER COMPREHENSIVE
CANCER CENTER
UNC Lineberger Cancer Network

Which of the following were endorsed by widowed fathers as priorities when communicating with their wives' medical team?

- Clear communication
- Earlier prognostic information
- Specific information about end-of-life
- All of the above

Powered by **Pollev Everywhere**
Start the presentation to see live content. For screen share software, share the entire screen. Get help at pollev.com/app

39

End-of-Life: Talking with Children

- Much depends on situation; child's age
- Explanations reflect care goals; what doctors expect to happen
- "No other medicines to try"
- No one's fault
- Decide/explain where the child will live

40

End-of-Life: Continuing Bonds

- Leave tangible legacies
- Drawings, photo albums
- Tell stories/reflect together
- Write letters

41

Innovative Programs at UNC

42

Parenting with Cancer Clinic at UNC

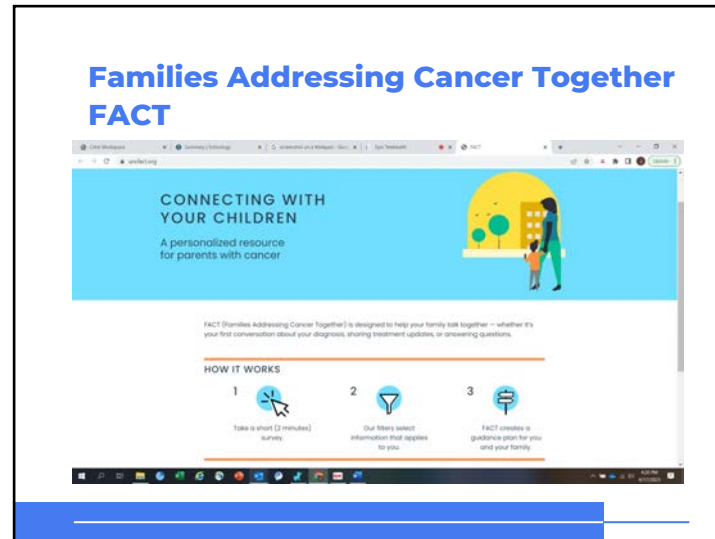
- Launches next week for parents w/ cancer who have minor-age children
- Every Wednesday afternoon; no charge
- Two broad areas:
 - 1) Intrafamilial communication, support, and coping
 - 2) Custody & estate planning issues

43

Families Addressing Cancer Together (FACT)

- A web-based intervention for parents with cancer (Park et al. 2022)
- Aim is to help parents communicate with their children about cancer
- Will be accessible broadly
- Watch this space!

44



45



46

References:

- Park EM, Deal AM, Yopp JM, Edwards T, Resnick SJ, Song MK, Nakamura ZM, Rosenstein DL. 2018. Understanding Health-Related Quality of Life in Adult Women with Metastatic Cancer Who Have Dependent Children. *Cancer*. 124(12): 2629-2636.
- Park EM, Deal AM, Yopp JM, Edwards T, Stephenson EM, Hailey CE, Nakamura ZM, Rosenstein DL. 2017. End-of-life parental communication priorities among bereaved fathers due to cancer. *Patient Education Counseling*. 100(5): 1019-1023.
- Park EM, Deal AM, Yopp JM, Edwards T, Wilson DJ, Hanson LC, Rosenstein DL. 2016. End-of-Life Experiences of Mothers with Advanced Cancer: Perspectives of Widowed Fathers. *Brit Med J Support Palliative Care*. 6(4): 437-444.
- Semple CJ, McCance T. 2010. Parents' experience of cancer who have young children: A literature review. *Cancer Nursing*. 33, 110-118.

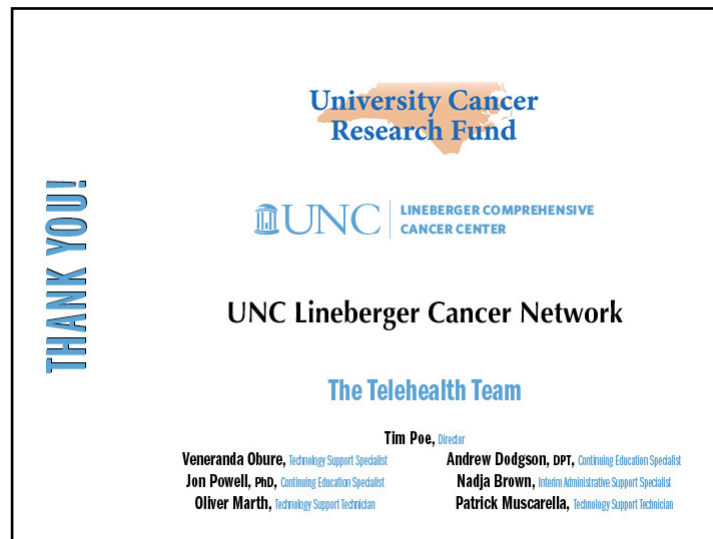
47

Discussion

48



49



50

UPCOMING LIVE WEBINARS

Complete details on upcoming LIVE webinars:
learn.unccln.org/live-webinars

51

SELF-PACED, ONLINE COURSES

Today's webinar will be available in April 2023 as a **FREE**, Self-Paced, Online Course

Complete details on Self-Paced Online Courses:
learn.unccln.org/spoc

52


THANK YOU FOR PARTICIPATING!

UNC Lineberger Cancer Network

Email: unclcn@unc.edu
Call: (919) 445-1000

Send us an email to sign up for our monthly e-newsletter.

Check us out at unclcn.org

 facebook.com/unccn  [@unc_cn](https://twitter.com/unc_cn)

53