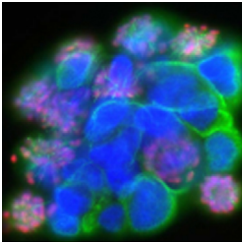


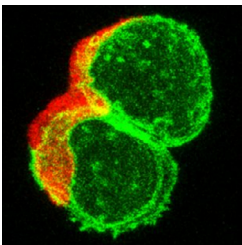
INTRODUCTION TO THE PATHOLOGY OF DISEASE

Fall 2023
Online Course

NCA&T Biol 342 NCCU BIOL 2030
learn.unclcn.org/pod2023



The Introduction to Pathology of Disease class is designed for upper level undergraduate and MS students who are interested in pathology, human tissue function, disease progression and are considering graduate school or a health professions career. The course is designed to incorporate both didactic seminars and group paper-based discussions to understand the current state of specific topics in pathobiology. This course is designed to prepare the student for future independent disease research or a health profession.

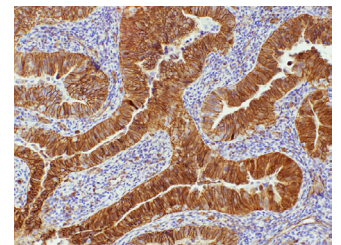
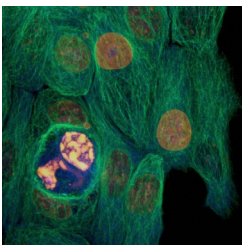


Three Modules of Instruction

Module 1: *The Basics of Pathology*

Module 2: *Cardiovascular System and Blood*

Module 3: *Cancer, Hijacking Development*



For More Information Contact:

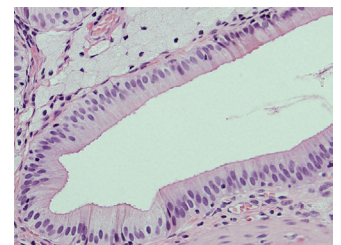
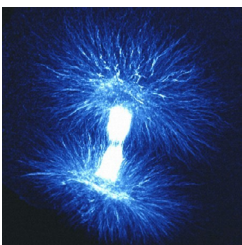
Andrew Gladden agladden@email.unc.edu

Georgette Dent georgette_dent@med.unc.edu

Breanna Jeffcoat bjeffcoa@email.unc.edu

Checo Rorie cjrorie@ncat.edu

Antonio Baines abaines@nccu.edu



NC Central
UNIVERSITY



LINEBERGER COMPREHENSIVE
CANCER CENTER



**NORTH CAROLINA AGRICULTURAL
AND TECHNICAL STATE UNIVERSITY**