

Sound Check

Start Time

Contact UNCLCN

Questions, Feedback, Technical Support:

Phone: (919) 445-1000

Email: unclcn@unc.edu

Website: unclcn.org

Poll Everywhere for Q&A
pollev.com/unclcn

Upcoming Live Webinars
learn.unclcn.org/live

Self-Paced, Online Courses
learn.unclcn.org/spoc

Co-sponsored with **UNC Health**

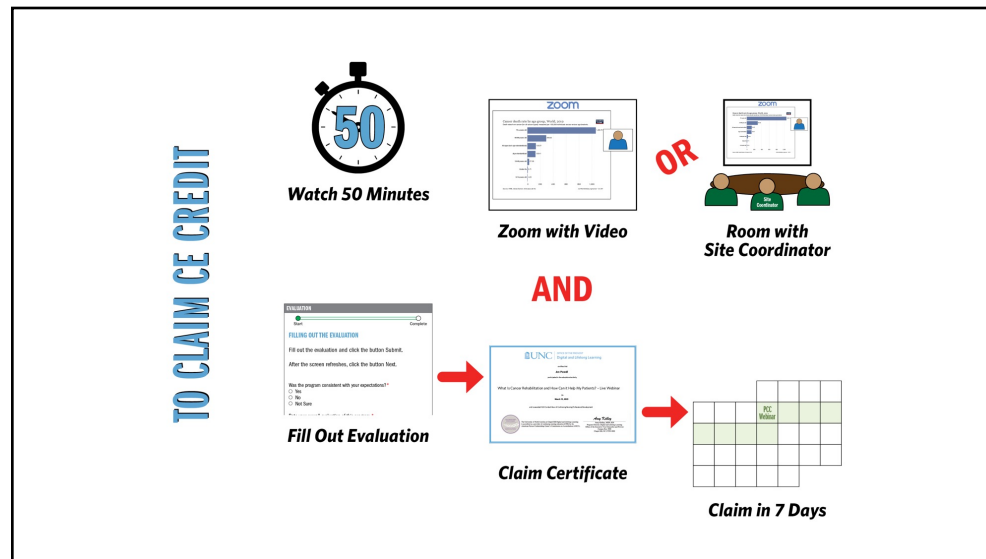
1

POLL EVERYWHERE

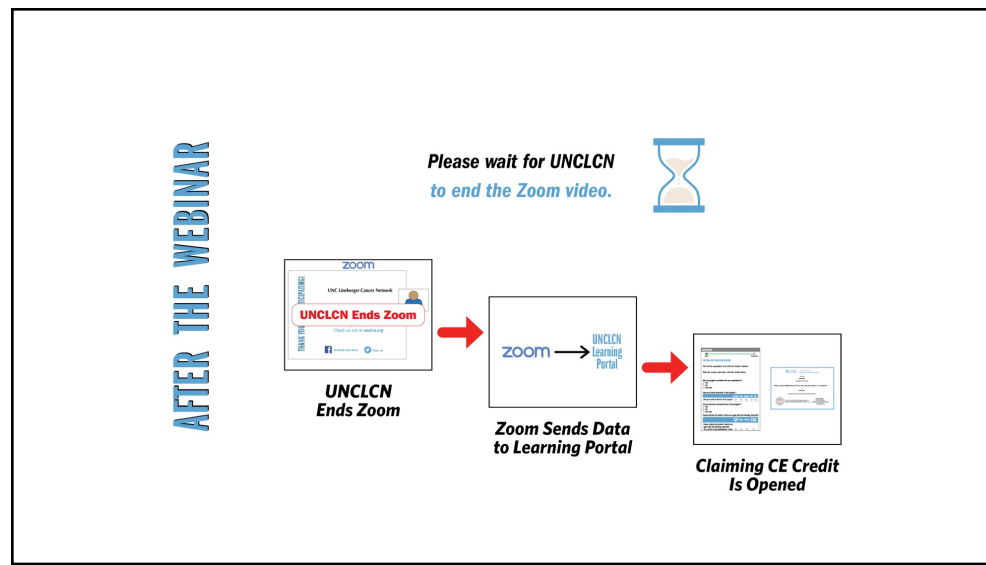
Join by Web

- 1 Go to PollEv.com
- 2 Enter **UNCLCN**
- 3 Respond to activity

2



3



4

CONTINUING EDUCATION CREDITS

FREE CE Credits with Live Webinars

Only Available at the Day and Time Indicated

PATIENT
CENTERED CARE

2nd Wednesday Jan-Oct
1st Wednesday Nov-Dec

12 pm - 1 pm

NCPD/CNE
ACPE
ASRT
CTR

ADVANCED
PRACTICE PROVIDER

3rd Wednesday Jan-Oct
2nd Wednesday Nov-Dec

4 pm - 5 pm

NCPD/CNE

RESEARCH
TO PRACTICE

4th Wednesday Jan-Oct
3rd Wednesday Nov-Dec

12 pm - 1 pm

CME
NCPD/CNE
ACPE
ASRT
CTR

SOUTHEASTERN AMERICAN
INDIAN CANCER HEALTH
EQUITY PARTNERSHIP

1st Wednesday Feb, May, Nov

12 pm - 1 pm

CME
NCPD/CNE

FREE CE Credits with Self-Paced, Online Courses

Available any Day and Time

learn.unccln.org

5

UNC Lineberger Cancer Network

PATIENT
CENTERED CARE

Live Webinar



Lauren Lux, MSW



Melissa Matson,
MSN, RN, AGPCNP-BC



Catherine Swift,
MSW, LCSW


Improving the Lives of Adolescents
and Young Adults with Cancer

September 13

6

3

OUR PRESENTER



Lauren Lux, MSW

Lauren Lux (she/her), LCSW, directs the AYA Oncology Program at UNC. Her work as Program Director focuses on patient care, psychosocial research, programming, provider education, quality improvement, and advocacy. Along with her fabulous partners, she leads efforts to improve care for AYAs around the state of North Carolina and is involved in the advancement of the AYA oncology field in the United States. She has worked as a clinical social worker in the field of oncology throughout her career and her clinical practice and program work is inspired and informed by the incredible young people she meets every day.

7

OUR PRESENTER

8

OUR PRESENTER

3. Lauren Lux, MSW has worked in oncology social work for 17 years

9

OUR PRESENTER

3. Lauren Lux, MSW has worked in oncology social work for 17 years
2. She is a Tarheel for work but a Blue Devil in her heart

10

OUR PRESENTER

3. Lauren Lux, MSW has worked in oncology social work for 17 years
2. She is a Tarheel for work but a Blue Devil in her heart
1. She works with the best people who take incredible care of the young people treated at UNC

11

OUR PRESENTER



Melissa Matson,
MSN, RN, AGPCNP-BC

Melissa Matson, MSN, RN, AGPCNP-BC, AOCNP is a nurse practitioner with the UNC Adolescent and Young Adult Cancer Program. Prior to joining the UNC AYA team in 2020, Melissa served as an adult leukemia NP both in the inpatient and outpatient setting. During that time, she loved precepting student NPs and continues as an adjunct instructor in the UNC School of Nursing today. Melissa completed her graduate education at the University of North Carolina at Chapel Hill, with a focus on adult-gerontology primary care and specialization in oncology. She holds two bachelor's degrees, one in nursing and one in communication and English.

12

OUR PRESENTER

13

OUR PRESENTER

3. Melissa Matson, MSN, RN, AGPCNP-BC launched a national collaborative of advanced practice providers caring for young adults with cancer

14

OUR PRESENTER

3. Melissa Matson, MSN, RN, AGPCNP-BC launched a national collaborative of advanced practice providers caring for young adults with cancer
2. Currently leading an interdisciplinary working group of UNC cancer and affiliated professionals developing guidance on engaging in sexual activity during cancer treatment

15

OUR PRESENTER

3. Melissa Matson, MSN, RN, AGPCNP-BC launched a national collaborative of advanced practice providers caring for young adults with cancer
2. Currently leading an interdisciplinary working group of UNC cancer and affiliated professionals developing guidance on engaging in sexual activity during cancer treatment
1. Has been published on the topic of supporting cancer caregivers

16

OUR PRESENTER



Catharine Swift,
MSW, LCSW

Catherine Swift (she/her), LCSW, provides direct patient care for the AVA population, acting as a counselor, advocate, and support services coordinator for teens and young adults. With a background in narrative medicine, religious studies, and palliative care, she is passionate about helping AVAs navigate the complex roles and identities they inhabit as young people, cancer patients, and so much more.

17

OUR PRESENTER

18

OUR PRESENTER

3. Catharine Swift, MSW, LCSW co-lead our AVA sarcoma palliative care collaborative with Dr. Jacob Stein and Dr. Julie Childers.

19

OUR PRESENTER



3. Catharine Swift, MSW, LCSW co-lead our AVA sarcoma palliative care collaborative with Dr. Jacob Stein and Dr. Julie Childers.
2. Her clinical training was at the Duke Hospice IPU and here with the AVA team and CCSP.


20

OUR PRESENTER

3. Catharine Swift, MSW, LCSW co-lead our AVA sarcoma palliative care collaborative with Dr. Jacob Stein and Dr. Julie Childers.
2. Her clinical training was at the Duke Hospice IPU and here with the AVA team and CCSP.
1. She's contributed to research around parenting with cancer with Dr. Leeza Park as a study interventionist.

21


Join by Web PollEv.com/unclcn
Join by Text Send **unclcn** to **22333**



AVA is an abbreviation for Adolescents and Young Adult.

(A) True 0%

(B) False 0%

22

ANCC DISCLOSURE

NCPD Activity #: L23007
1.0 Contact Hours Provided

Relevant Financial Relationship:
 No one with the ability to control content of this activity has a relevant financial relationship with an ineligible company.

Criteria for Activity Completion:
 Criteria for successful completion requires attendance at the NCPD activity and submission of an evaluation within 30 days.

Approved Provider Statement:
 UNC Health is approved as a provider of nursing continuing professional development by the North Carolina Nurses Association, an accredited approver by the American Nurses Credentialing Center's Commission on Accreditation.

23



AYA is an abbreviation for Adolescents and Young Adult.

True 0%

False 0%

Start the presentation to see live content. For screen share software, share the entire screen. Get help at pollev.com/app

24

Improving the Lives of Adolescents and Young Adults with Cancer

LAUREN LUX, LCSW
CATHERINE SWIFT, LCSW
MELISSA MATSON, NP

SEPTEMBER 13, 2023

25

Objectives

- Identify the unique and unmet needs of adolescents and young adults diagnosed with cancer.
- Describe tools that health care professionals can use to provide developmentally and age appropriate care to AYAs.
- Recognize strategies that health care professionals and healthcare systems can deploy to create a better treatment environment for AYAs.

26

The ABC's of Adolescents and Young Adults:

Age Appropriate Information

No BS

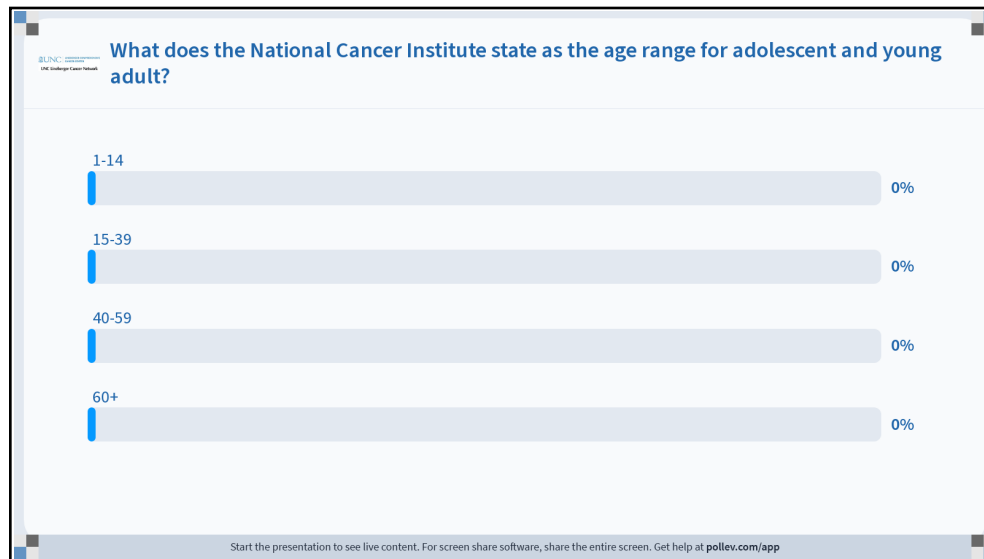
Care for the Whole Person



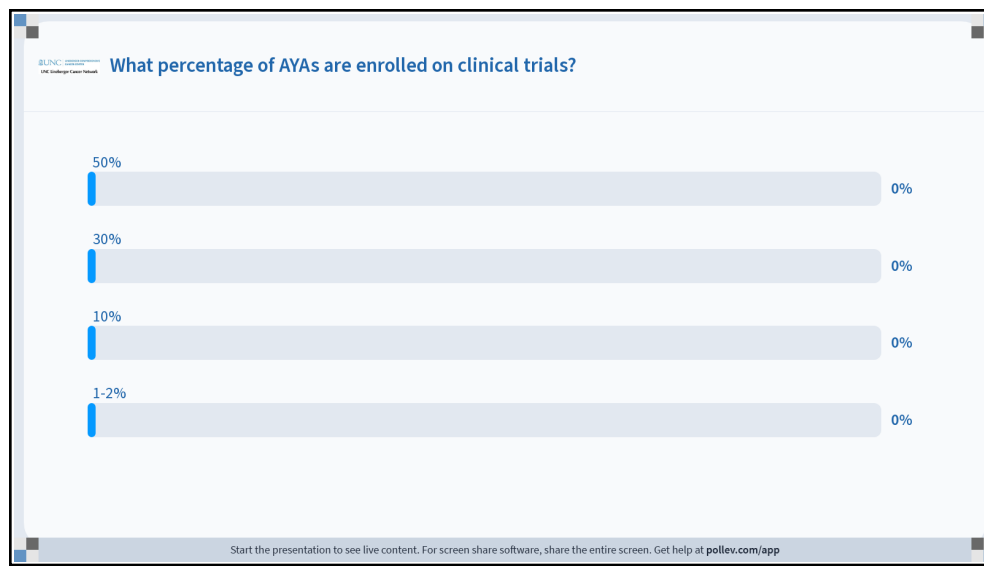
27



28

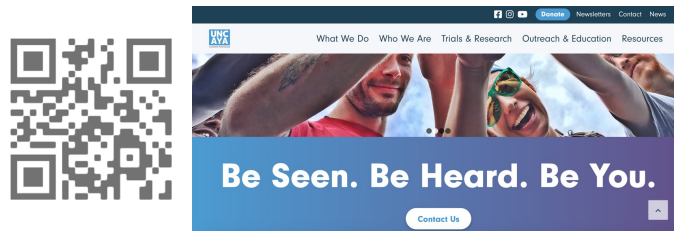


29



30

www.uncaya.org



31

Our Mission

The UNC AYA Cancer Program **provides age appropriate psychosocial and medical care** for adolescent and young adult (AYA) cancer patients and their support communities, **advances research** in the field of AYA oncology, **educates providers** about the unique needs of young people living with cancer, and **improves care for AYAs** across the state of North Carolina.

32

Our Team



Lauren Lux, Program Director



Dr. Andrew Smitherman, Medical Director



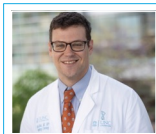
Catherine Swift, AYA Social Worker



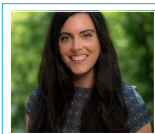
Melissa Matson, AYA NP



Jordan Hunt, Fertility Preservation



Dr. Jake Stein, Medical Oncology Liaison



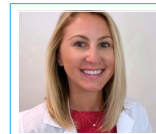
Dr. Emily Haines, AYA Research Director



Aspen Yordy, AYA Research Coordinator



Dr. Julie Childers, Young Adult Palliative Care



Ali Manikowski, Pediatric & Adolescent Psychologist

33

Scope of Work



Clinical Care

- NP & SW Consult at Diagnosis (13-39y)
- Triage (18-22y)
- YA Survivorship Clinic (Hillsborough)
- Sarcoma Palliative Care Collaborative
- Sexual Health Working Group
- Fertility Preservation Support

Research

- Clinical Trials (connection between peds and adult cooperative groups)
- AYA Research Working Group (Nichols)
- AYA Cancer Registry
- AYA P01: Kaiser California, Utah, UNC (Nichols, Baggett) – AYA survivorship outcomes
- Co-is on multiple studies conducted by colleagues in Public Health, Nursing, Social Work, and Journalism

Education / Advocacy

- Mentoring learners (SW, Onc Fellows, Pall Care Fellows, Residents, Medical Students, and soon NPs)
- Annual NC AYA Cancer Symposium – October 20 in Winston-Salem (QR Code)
- Consult support for program development at other institutions

34

What you don't have to be...

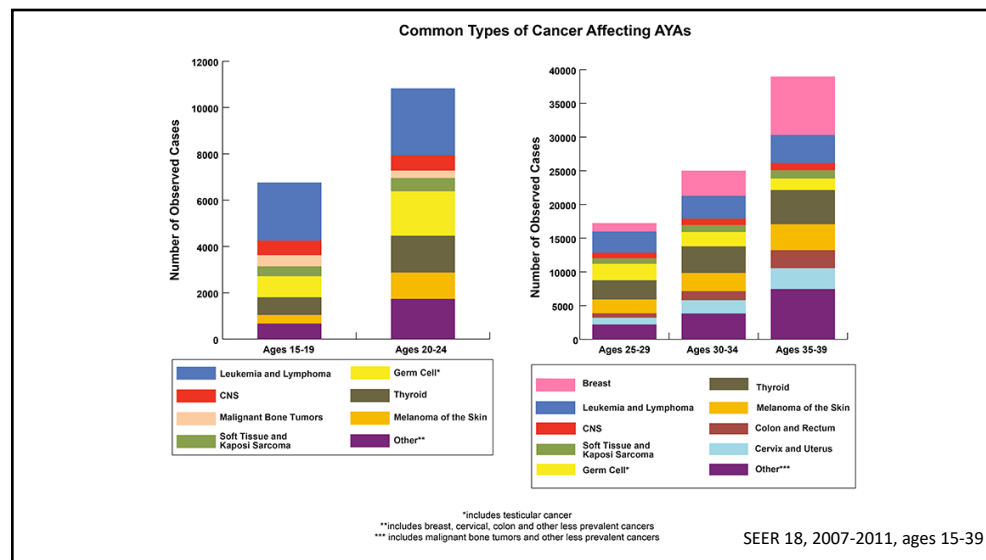
1. Cool
2. Up to date on recent slang terms
3. A snap chat user
4. Young
5. Cool

35

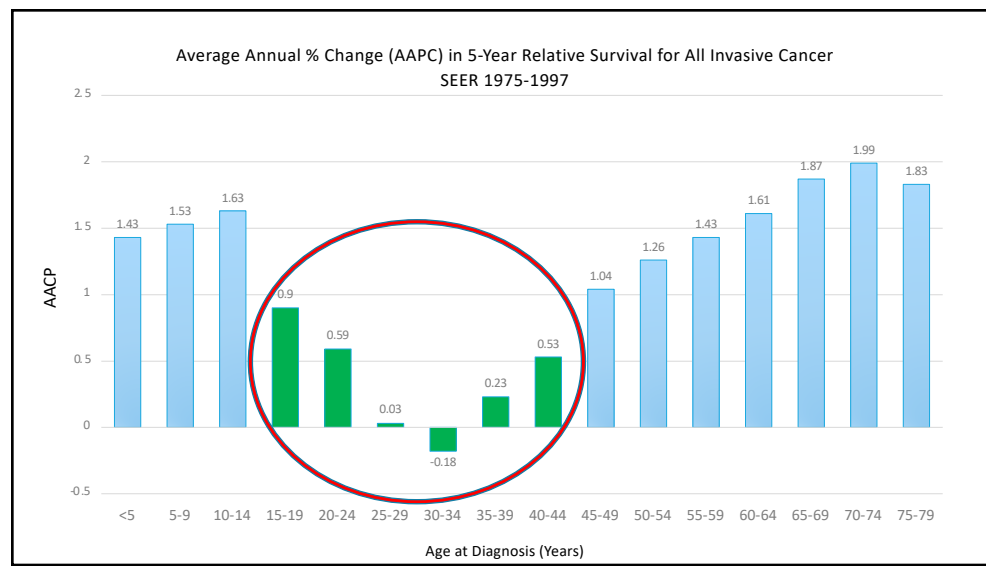
What you do have to be...

1. Authentic
2. Flexible
3. Compassionate
4. Honest
5. Willing to get to know the PERSON not just the PATIENT

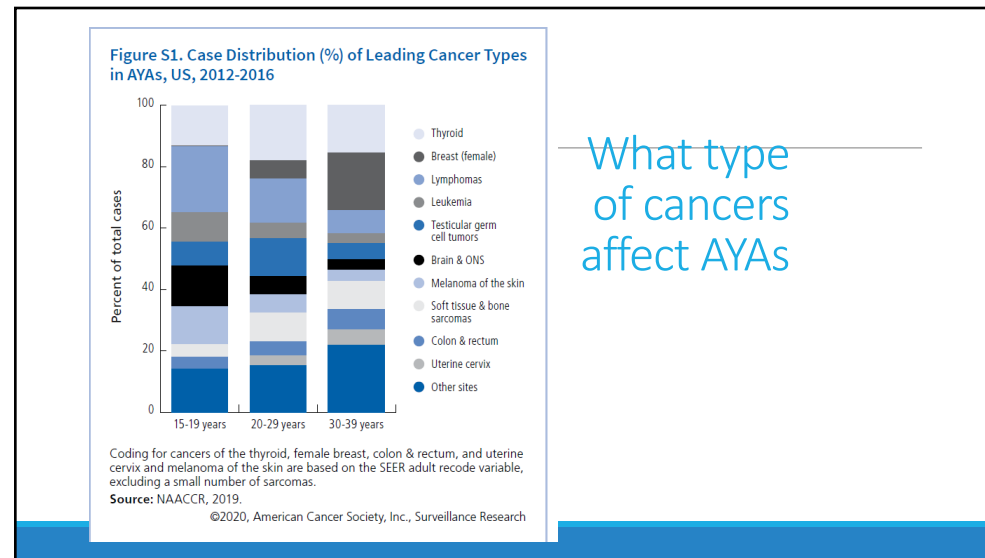
36



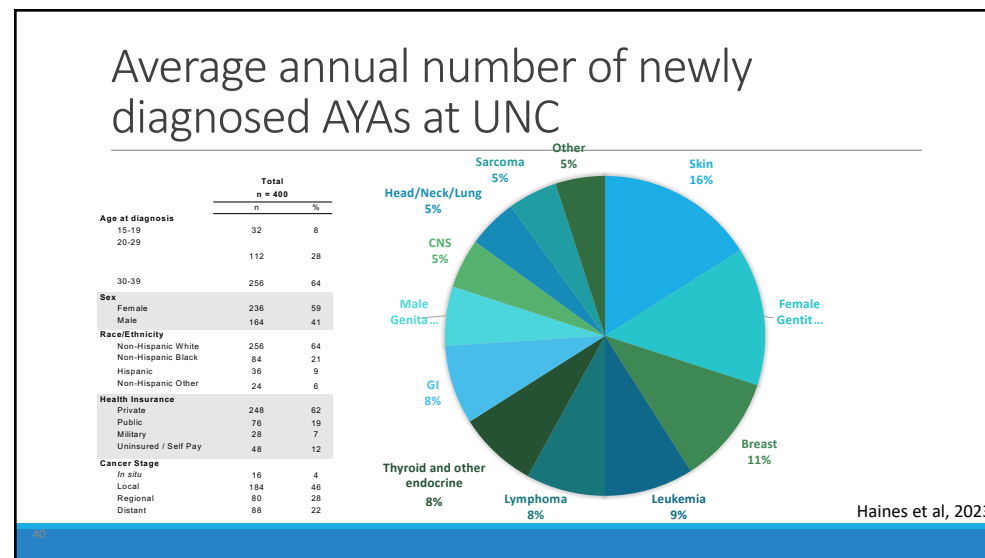
37



38



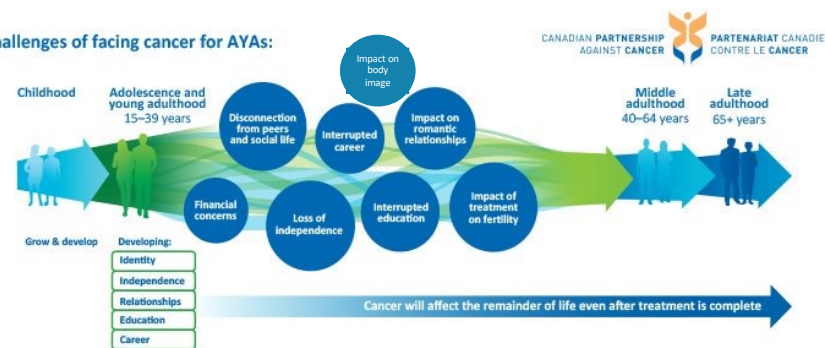
39



40

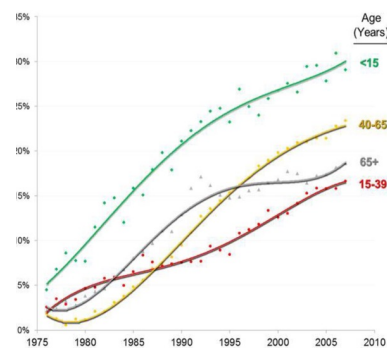
Defining AYA by “Circumstantial Age”

Challenges of facing cancer for AYAs:



Canadian Partnership Against Cancer. 2017

41



AYA Survival Gap and Trial Enrollment

Unger et al. Am Soc Clin Oncol Educ Book. 2016; 35: 185-198.

42

Why poor outcomes?

- Tumor biology
- Delay in diagnosis
- Adherence to therapy
- Underinsured/not insured
- Psychosocial issues
- Financial issues
- Low clinical trial enrollment rate(1-2% vs. 60-70% in peds)
- Treatment protocols used vary

Barr, D. et al, 2016

43

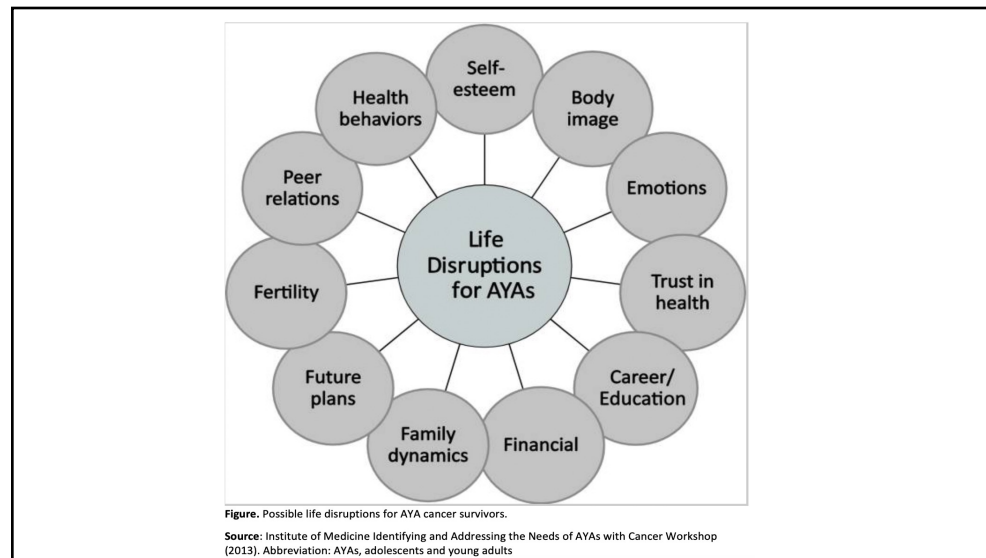
AYA developmental tasks

- Establishing autonomy from parents
- A personal set of values and identity
- Strong peer relationships, including intimate and sexual relationships
- Obtaining adequate preparation to join the workforce
- Financial independence

**A note about frontal lobes



44



45

No BS

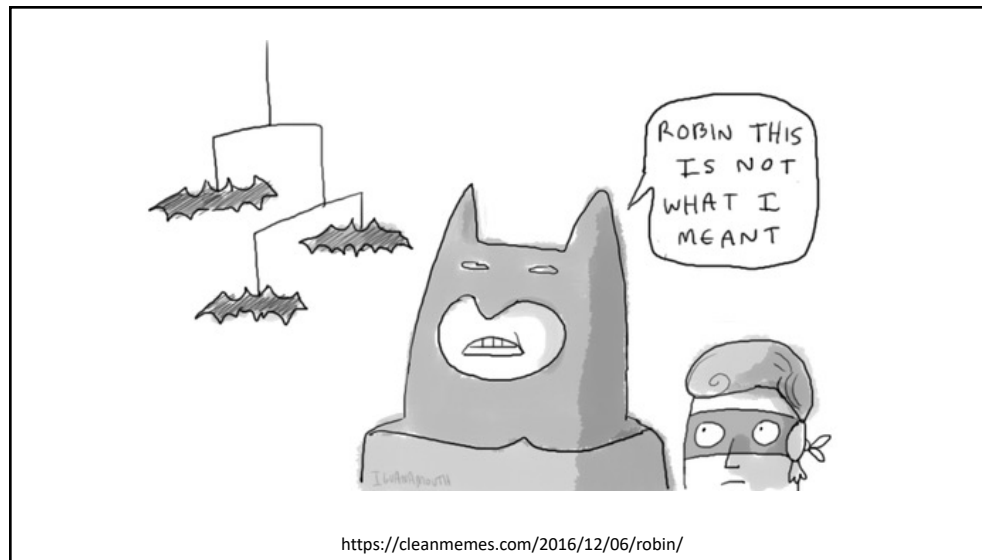
AKA How do we effectively communicate with AYAs

46

“The simplest advice I can give to facilitate conversations with adolescents and young adults is this: be respectful, and genuine. We are forced to confront our mortality at a time in our lives when society tells us we are invincible, fearless, limitless. When this construct crashes down around us and shatters, we can feel vulnerable...”

-23 year old with relapsed lymphoma and has dreams of drinking espresso at every coffee shop in the triangle

47



<https://cleanmemes.com/2016/12/06/robin/>

48

Communication

- Honesty is key
- Direct
- Non-judgmental
- Avoid controlling/punitive language
- Help AYA understand how they best receive information
- Repeat, repeat, repeat
- Text vs. Phone vs. Email
- **Discuss things other than cancer**

Zebrack, B. 2008

49

Control- how do we give more?

Often want very much control over day-to-day issues

Where can we give young adults control

- Food
- Schedule
- Rooms
- "Opt in" activities
- Decision making
- Peers at the bedside
- Admission dates
- Physical activity

50

Age Appropriate Information

What are AYA specific information needs?

51

“Can you come talk to me bout
that sperm thing?”

-19 year old with ALL and biggest Steelers fan in NC

52

Fertility Preservation

- Major barriers:
 - urgency to initiate treatment
 - inadequate information
 - clinic time constraints
 - cost
 - relationship status
 - sociodemographic status
 - **HOSPITAL PROCESS**
- Currently no tracking systems or evidence based guidelines regarding these topics
- Get educated– ECHO & ENRICH

Flink, Sheeder, Kondapalli- 2016

53

“What’s the deal with having sex IN the hospital?”

-25 year old going through BMT who loves to hike

54

S-E-X

- Why is this so important to discuss with patients?
 - Reproductive health ranks as one of the most important issues cited by AYAs
 - Risk-taking behaviors of AYAs + Not having SEX talks = health risks (esp. if fertility status is ?)
- Who is having these conversations?
- Include partners
- BETTER Model: Bring up the topic, Explain that sex is an important part of life, Tell patients that resources will be found to address their concerns, Timing of intervention, Education re: sexual side effects of tx, Record

Murphy, Klosky, Termuhlen, Sawczyn, Quinn. 2013
Katz, Anne. 2005

55

“What if I just eat the pot instead of smoke it?”

-20 year old with AML who is a self described “hater of vegetables”

56

Drug and Alcohol Use

- Very little data about substance use and AYA
- Some indication that substances are used to cope with stressors
- Open, honest conversations
- Inform of risks
- Provide better options
- Sticky situations— Providers lack of consensus

Daniel, C. et al. 2015

57

“What if I stand outside the 3 point line and only shoot during the game? No one will touch me, I swear!”

-25 year old with AML and a beautiful 1 year old daughter

58

Physical Activity

- AYAs cite physical activity as a major unmet need during treatment
- Has been shown to reduce treatment symptoms and increase mood
- Must adjust exercise to meet the needs of younger patients
 - Pokemon Go
 - Laps around football field
 - Over the door basketball hoop
 - Softball player

Galvao, DA. 2005

59

“Please don’t tell my mom _____ !”

-All of the patients

60

“I never imagined my days and nights would be filled with insulin shots, IV ports, steroids, and lots of fatigue. There are new things to be learned every day. Am I up for the challenge? Will I do a good job? Can I handle the pressure?”

-26 year old wife who hates running but has to do it every morning in the military

61

Caregivers, Partners & Confidentiality

- Consent, confidentiality, and decision making capacity
- Legal obligations
- Ethical considerations
- Establish expectations from the beginning
- How do we support them?

62

Care for the Whole Person

Who are you before, during, and after treatment?

63

Transitions – survivorship, end of life and palliative care

- AYAs experience “transitions within transitions”
- End of treatment to survivorship can be a particularly difficult time
 - What life does an AYA “return” to and what does “normal” look like?
- Living with metastatic disease as young person – symptom management and goals of care/priorities
- End of life and care utilization may look very different for AYAs

64

Resources

General

- Stupid Cancer
- Critical Mass
- NCCN Guidelines “Caring for Adolescent and Young Adult Patients”
- Teen Cancer America

Fertility Preservation

- Livestrong
- Save My Fertility (also and App)
- Fertile Action
- MyOncofertility.org
- NCI

Financial

- SamFund
- Hope for Young Adults with Cancer
- The Ulman Cancer Fund for Young Adults
- Patient Advocate Foundation
- Cancer Care

Parenting with Cancer

- Single Father’s Due to Cancer
- NCI
- Cancer.gov
- Cancer.org
- Mghpact.org (Parenting at a challenging time)
- American Cancer Society

Cancer Peer Connections

- Instapeer
- Stupid Cancer Meet Ups
- Imerman Angels
- Young Survival Coalition
- Cancer Support Community

Career & Legal

- Cancer and Careers
- National Cancer Legal Services Network

Adventure Programs

- First Descents
- Epic Experience
- True North Treks

65

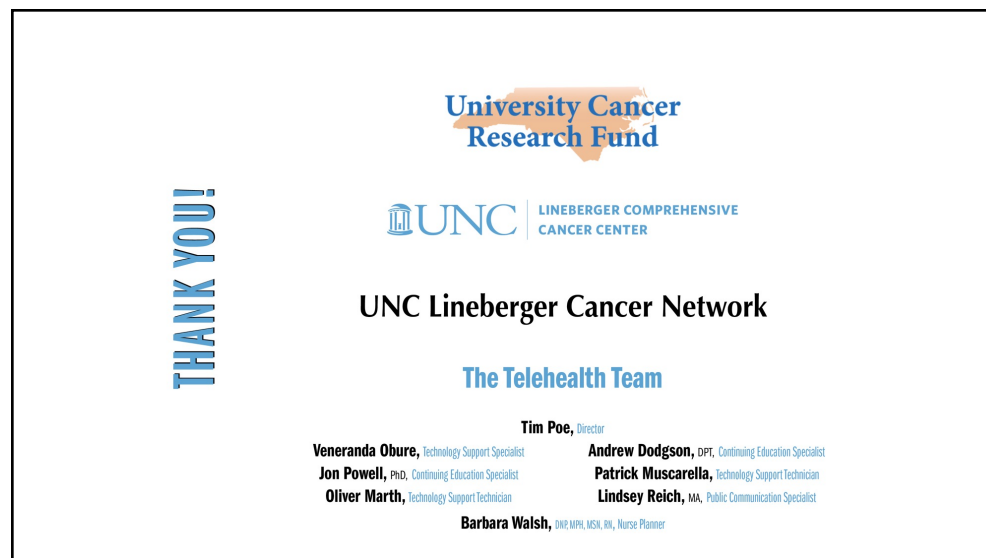
References

- Barr, R., Ferrari, A., Ries, L., Whelan, J. and Bleyer, W. (2016). Cancer in Adolescents and Young Adults. JAMA Pediatrics, 170(5), p.495. (Seminal)
- Flink Dina M., PhD, Sheeder Jeanelle, MSPH, PhD, and Kondapalli Laxmi A., MD, MSCE. Journal of Adolescent and Young Adult Oncology. August 2016 (Seminal)
- Murphy, D., Klosky, J., Termuhlen, A., Sawczyn, K. and Quinn, G. (2013). The need for reproductive and sexual health discussions with adolescent and young adult cancer patients. Contraception, 88(2), pp.215-220. (Seminal)
- Katz, A. (2005). Do Ask, Do Tell. AJN, American Journal of Nursing, 105(7), pp.66-68. (Seminal)
- Daniel, Casey L, PhD., M.P.H., Emmons, K.M., PhD., Fasciano, K., PsyD., Nevidjon, Brenda, MSN,R.N., F.A.A.N., Fuemmeler, Bernard F, PhD., M.P.H. & Demark-Wahnefried, W. 2015. “Needs and Lifestyle Challenges of Adolescents and Young Adults With Cancer: Summary of an Institute of Medicine and Livestrong Foundation Workshop”, Clinical Journal of oncology nursing, vol. 19, no. 6, pp. 675-681. (Seminal)
- Galvao, D. (2005). Review of Exercise Intervention Studies in Cancer Patients. Journal of Clinical Oncology, 23(4), pp.899-909. (Seminal)
- Zembrack B. (2008) Information and service needs for young adult cancer patients Support Care Cancer Dec;16(12):1353-60 (Seminal)
- Cancer Stat Facts: Cancer Among Adolescents and Young Adults (AYAs) (Ages 15–39). Distribution based on age-adjusted rates of new cases. SEER 18, 2007-2011, ages 15-39. Verified September 7, 2023. <https://seer.cancer.gov/statfacts/html/aya.htm>
- Average Annual % Change (AAPC) in 5-Year Relative Survival for All Invasive Cancer. SEER 1975-1997. Verified September 7, 2023. <https://seer.cancer.gov/statfacts/html/aya.htm>
- Canadian Partnership Against Cancer. Adolescents & Young Adults with Cancer: A System Performance Report. Toronto (ON): Canadian Partnership Against Cancer; 2017 Apr. 15 p.
- Haines ER, Lux L, Stein J, Swift C, Matson M, Childers J, Kleissler D, Mayer DK, Steiner N, Steiner L, Rosenstein D, Gold S, Smitherman AB. Developing a Comprehensive Adolescent and Young Adult Cancer Program: Lessons Learned from 7 Years of Growth and Progress. J Adolesc Young Adult Oncol. 2023 May 4. doi: 10.1089/jayao.2023.0015. Epub ahead of print. PMID: 37155196.

66



67



68

UPCOMING LIVE WEBINARS



ADVANCED
PRACTICE PROVIDER
Live Webinar

September 20
4:00 PM

Oncologic Emergencies: Superior Vena Cava Syndrome,
Hypercalcemia, and SIADH
Allison Phillips, MPAP, MHPE, PA-C



RESEARCH
TO PRACTICE
Live Webinar

September 27
12:00 PM

Caring for Older Adults with Acute Leukemia in North
Carolina: Updates for 2023
Daniel Richardson, MD, MA, MSc



PATIENT
CENTERED CARE
Live Webinar

October 11
12:00 PM

Role of Specialty Pharmacy
Sonali Acharya, PharmD

Complete details on upcoming Live Webinars:
learn.uncicn.org/live-webinars

69

SELF-PACED, ONLINE COURSES



ADVANCED
PRACTICE PROVIDER
Self-Paced
Online Course

Parenting with Cancer
Justin Yopp, PhD



RESEARCH
TO PRACTICE
Self-Paced
Online Course

Radiation Oncology Management of Lung Cancer in
NC: Update on Small-Cell Lung Cancer
Ashley Weiner, MD, PhD



PATIENT
CENTERED CARE
Self-Paced
Online Course

Dos, Don'ts, and the Basics of Providing Care to
Patients Experiencing Intimate Partner Violence
Joseph Polich, MSW, LCSW-A, JD

Complete details on our Self-Paced, Online Courses:
learn.uncicn.org/spoc

70

THANK YOU FOR PARTICIPATING!

UNC Lineberger Cancer Network

Email: unclcn@unc.edu

Call: (919) 445-1000

Send us an email to sign up for our monthly e-newsletter.

Check us out at unclcn.org



facebook.com/unccn



unclinebergercancernetwork



linkedin.com/in/unccn