

**Sound Check**  
11:55  
**Start Time**  
12:00

**Contact UNCLCN**  
Questions, Feedback, Technical Support:  
Phone: (919) 445-1000  
Email: unclcn@unc.edu  
Website: unclcn.org

Go to [poller.com/unclcn](http://poller.com/unclcn) for Q&A  
Upcoming Live Webinars: [learn.unclcn.org/live](http://learn.unclcn.org/live)  
Self-Paced, Online Courses: [learn.unclcn.org/spac](http://learn.unclcn.org/spac)

These webinars are a collaborative initiative  
Duke Cancer Institute | UNC Lineberger Cancer Center | UNC Health System | UNC School of Medicine | UNC Gillings School of Public Health

1

---

---

---

---

---

---

---

---

---

---

### Poll Everywhere

Join by Web

- 1 Go to [PollEv.com](http://PollEv.com)
- 2 Enter UNCLCN
- 3 Respond to activity

2

---

---

---

---

---

---

---

---

---

---

### To Claim CE Credits

Watch 53 Minutes **OR** Zoom with Video to See the Slides **OR** Room with Site Coordinator

**AND**

Fill Out Evaluation **AND** Claim Certificate **AND** Claim in 7 Days

3

---

---

---

---

---

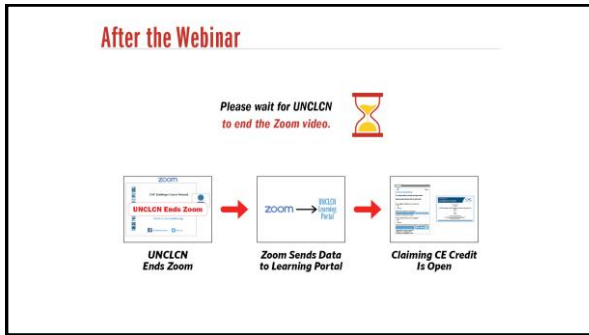
---

---

---

---

---



4

---

---

---

---

---

---

---

---

### Spread the Word!

Do you enjoy our webinars and feel others may benefit, too?  
Help us spread the word!

Become a promoter:  
Receive special emails to share within your organization!  
[unclcn.org/promoter](https://unclcn.org/promoter)

Follow our social channels:

 [facebook.com/unclcn](https://facebook.com/unclcn)     [unclcn.org/cancer-network](https://unclcn.org/cancer-network)  
 [linkedin.com/in/unclcn](https://linkedin.com/in/unclcn)

Send questions to [unclcn@unc.edu](mailto:unclcn@unc.edu) or (919) 445-1000.  
Thank you for spreading the word!

5

---

---

---

---

---

---

---

---



**SOUTHEASTERN AMERICAN INDIAN CANCER HEALTH EQUITY PARTNERSHIP**

**Embracing Indigenous Wisdom in Evidence Based Cancer Prevention: A Path of Collaboration, Respect, and Insight on Duke's Yorage**      **February 7**

**Fani Akinyemi, PhD, MS**      **Fory V. Locklear, MD**  
**Vivette J. Forbes-Lugini, MD**      **Angel Ouedraogo, MD, MPH**

Alumni Health | Comprehensive Cancer Center | Duke Cancer Institute | UNC LINEBERGER COMPREHENSIVE CANCER CENTER

6

---

---

---

---

---

---

---

---

### Our Presenter



**Tomi Akinyemi,**  
PhD, NC

Dr. Akinyemi is a Professor of Population Health Sciences, Onco and Global Health. Her methodological expertise combines social and molecular cancer epidemiology, cancer biology, and health disparities. Her research accomplishments have focused on articulating and assessing conceptual and empirical approaches for cancer health disparities research, specifically, disentangling the role of race as a social construct and race-associated biological mechanisms that contribute to cancer disparities. Dr. Akinyemi also serves as the Vice Chair for Diversity, Equity, and Inclusion at the Department of Population Health Sciences, and Associate Director for Community Outreach, Engagement, and Equity at the State Cancer Institute. Dr. Akinyemi's leadership centers around building cross-enterprise, multi-stakeholder coalitions to advance health equity, promote inclusion and diversity, and mentor the next generation of diverse, career-focused research scholars. Dr. Akinyemi has received numerous awards, including the 2023 Michelle Winn Inclusive Excellence Award.

Dr. Akinyemi has published over 150 peer-reviewed publications, and her research program has been continuously funded by the National Institutes of Health, Susan G. Komen and the V Foundation. She has mentored (formally and informally) at least 50 trainees and junior faculty, over 50% of whom are IRM. Dr. Akinyemi works extensively with diverse stakeholders, including community-based organizations, policy makers, providers, health system leadership, and leaders from diverse communities to develop impactful, evidence-based interventions to advance health equity.

7

---

---

---

---

---

---

---

---

---

---

### Our Presenter

8

---

---

---

---

---

---

---

---

---

---

### Our Presenter

3. Recipient of Duke School of Medicine's 2023 Winn Faculty Award for her commitments to improving EDI policy and resources, reducing disparities within cancer research, and mentorship

9

---

---

---

---

---

---

---

---

---

---

### Our Presenter

3. Recipient of Duke School of Medicine's 2023 Winn Faculty Award for her commitments to improving EDI policy and resources, reducing disparities within cancer research, and mentorship
2. Has mentored more than 55 trainees and junior faculty in her four years at Population Health Sciences, more than half of whom are from underrepresented in medicine backgrounds

10

---

---

---

---

---

---

---

---

### Our Presenter

3. Recipient of Duke School of Medicine's 2023 Winn Faculty Award for her commitments to improving EDI policy and resources, reducing disparities within cancer research, and mentorship
2. Has mentored more than 55 trainees and junior faculty in her four years at Population Health Sciences, more than half of whom are from underrepresented in medicine backgrounds
1. Dr. Akinjemiju has published over 150 peer-reviewed publications, and her research program has been continuously funded by the National Institutes of Health, Susan G. Komen and the V Foundation

11

---

---

---

---

---

---

---

---

### Our Presenter



Tony V. Locklear, III

Tony V. Locklear is a member of the Lumbee Tribe with Tuscarora heritage. He is a passionate advocate for decolonizing work and health equity. Tony works as a Quality Assurance Coordinator at the Hoke County Health Department, a Tribal Liaison at the NC Department of Health and Human Services, and independently as a Community Researcher/Consultant. He is also pursuing a doctoral degree in Public Health Education at UNC-Chapel Hill.

Tony began his journey in grassroots organizing and community health education, which helped him understand how public health intersects with culture. He uses this insight to offer his research, focusing on integrating culture into public health solutions for holistic well-being and equity.

Tony is committed to cultural preservation and has earned respect in Indigenous and non-Indigenous circles. He centers his work on decolonizing principles, setting to address historical injustices and foster an inclusive, respectful, and culturally appropriate future.

Tony is known for developing sustainable community programs that align with native traditions. His initiatives in healthcare, education, economic empowerment, and environmental stewardship have had a significant impact.

As a keynote speaker and panelist, Tony emphasizes authentic engagement as the key to successful partnerships with native communities. He believes that access to health and justice should be universal, driving positive change for native communities and society as a whole.

12

---

---

---

---

---

---

---

---

**Our Presenter** \_\_\_\_\_

---

---

---

---

---

---

---

---

13

**Our Presenter** \_\_\_\_\_

**3.** Tony V. Locklear is a member of the Lumbee Tribe with Tuscarora heritage.

---

---

---

---

---

---

---

---

14

**Our Presenter** \_\_\_\_\_

**3.** Tony V. Locklear is a member of the Lumbee Tribe with Tuscarora heritage.

**2.** Tony works as a Quality Assurance Coordinator at the Hoke County Health Department, a Tribal Liaison at the NC Department of Health and Human Services, and independently as a Community Researcher/Consultant.

---

---

---

---

---

---

---

---

15

### Our Presenter

3. Tony V. Locklear is a member of the Lumbee Tribe with Tuscarora heritage.
2. Tony works as a Quality Assurance Coordinator at the Hoke County Health Department, a Tribal Liaison at the NC Department of Health and Human Services, and independently as a Community Researcher/Consultant.
1. He is also pursuing a doctoral degree in Public Health Education at UNC-Greensboro.

16

---

---

---

---

---

---

---

---

---

---

### Our Presenter



**Vivette Jeffries-Logan, B.S.**

Vivette Jeffries-Logan is a citizen of the Occaneechi Band of the Sapponi Nation. She served her People as an elected member of the Tribal Council and as the Planning Director of the OCB's Tribal Health Clinic. She has been a speaker with Dismal Swamp National Wildlife Refuge, served as the Director of Training and Technical Assistance of a state-funded, historic coalition, and served on the Advisory Board for the American Indian Center at a local university. She also served as Curriculum Designer and instructor for the Nursing Electively with Tribal Government courses for the Centers for Disease Control and an Case Faculty with the Wilbur C. Friday Fellowship for Human Relations. Vivette is grateful for the opportunity to work with Tony Locklear as they co-facilitate tribal visits to the Indigenous Nations that share geography with the State of North Carolina and beyond. She is deeply honored by the encouragement and trust of her relatives.

She was recognized as an Honoree at the Women's Honor Ceremony during the American Indian Women of Proud Nations Conference, United Tribes of North Carolina also honored her with the Distinguished Service to Indian People Award and she was also honored with the 2020 Award Excellence Award from Guilford College.

Vivette earned a B.A. in Psychology and Community Studies from Guilford College and an Associate Degree (A.A.S.) in Hospitality Management from Kanassee Community College. She graduated from the North Carolina Native Leadership Institute at the American Indian Center of the University of North Carolina. She is also a Certified Executive Chef with 17 years of experience in Hospitality Leadership and Management. Vivette is in her second year of the Leadership for Sustainability: Nation's progress at the University of Tennessee. When not at work, she can find Vivette laughing with relatives, taking history to beloved community, holding legendary pound cakes and other southern delicacies, and attending powwows and gatherings across the state.

17

---

---

---

---

---

---

---

---

---

---

### Our Presenter

18

---

---

---

---

---

---

---

---

---

---

**Our Presenter**

- 3. Vivette Jeffries-Logan, BA, is both a teacher and a student.

19

---

---

---

---

---

---

---

---

**Our Presenter**

- 3. Vivette Jeffries-Logan, BA, is both a teacher and a student.
- 2. She was elected and served her People for seven years on their Tribal Council.

20

---

---

---

---

---

---

---

---

**Our Presenter**

- 3. Vivette Jeffries-Logan, BA, is both a teacher and a student.
- 2. She was elected and served her People for seven years on their Tribal Council.
- 1. Her path/life work is to be of service to Indigenous people.

21

---

---

---

---

---

---

---

---

### Our Presenter



Angel Oxendine,  
BS, BSW

Although presently residing in Raleigh, North Carolina, Angel Oxendine is a native of Lumberton, North Carolina. She is an American Indian from the Lumbee Tribe of North Carolina, which is located in Pembroke, North Carolina. She recently earned a Bachelor of Science in Criminal Justice and a Bachelor of Social Work from Elizabeth City State University and is currently enrolled in North Carolina Central University's Master of Social Work program as a graduate student. As a Community Engagement intern at Duke Cancer Institute, Angel got her start in the field of public health by interacting with various American Indian groups and educating them about the various forms of cancer and the tobacco cessation talking circle. Angel participated in the client's program implementation and served as a facilitator for the Tobacco Cessation talking circle where she helped clients learn about their triggers and different forms of medication.

---

---

---

---

---

---

---

---

22

### Our Presenter

### Our Presenter

3. Angel Oxendine, BS, BSW is an American Indian from the Lumbee Tribe of North Carolina, which is located in Pembroke, North Carolina.

---

---

---

---

---

---

---

---

---

---

---

---

---

---

---

---

23

24



### Our Presenter

3. Angel Oxendine, BS, BSW is an American Indian from the Lumbee Tribe of North Carolina, which is located in Pembroke, North Carolina.
2. Angel graduated from Elizabeth City State University with a Bachelor of Science in Criminal Justice and a Bachelor of Social Work. She is currently in the Master's of Social Work program at NCCU as a graduate student.

25

---

---

---

---

---

---

---

---

### Our Presenter

3. Angel Oxendine, BS, BSW is an American Indian from the Lumbee Tribe of North Carolina, which is located in Pembroke, North Carolina.
2. Angel graduated from Elizabeth City State University with a Bachelor of Science in Criminal Justice and a Bachelor of Social Work. She is currently in the Master's of Social Work program at NCCU as a graduate student.
1. She is currently a Community Engagement intern at Duke Cancer Institute.

26

---

---

---

---

---

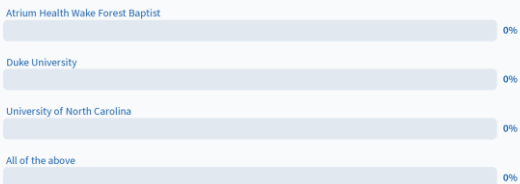
---

---

---



### Which institutions are represented in the SAICEP partnership?



27

---

---

---

---

---

---

---

---

**ACCME Disclosure**

This activity has been planned and implemented under the sole supervision of the Course Director, Stephanie Wheeler, PhD, in association with the UNC Office of Continuing Professional Development (CPD). The course director and CPD staff have no relevant financial relationships with ineligible companies as defined by the ACCME.

A potential conflict of interest occurs when an individual has an opportunity to affect educational content about health-care products or services of a commercial interest with which they/she has a financial relationship. The speakers and planners of this learning activity have not disclosed any relevant financial relationships with any commercial interests pertaining to this activity.

The presenters have no relevant financial relationships with ineligible companies as defined by the ACCME.

28

---

---

---

---

---

---

---

---

 SAICEP is the abbreviation for Southeastern American Indian Cancer Health Equity Partnership.

True  0%

False  0%

Start the presentation to see live content. For screen share software, share the entire screen. Get help at [polls.com/help](https://polls.com/help)

29

---

---

---

---

---

---

---

---

**EMBRACING INDIGENOUS WISDOM IN EVIDENCE-BASED CANCER PREVENTION:**

**A PATH OF COLLABORATION, RESPECT, AND INSIGHT ON DUKE'S VOYAGE**

 **SOUTHEASTERN AMERICAN INDIAN CANCER HEALTH EQUITY PARTNERSHIP (SAICEP)**

A COLLABORATION BETWEEN

30

---

---

---

---


---

---

---

---


**Duke University Indigenous Land Acknowledgement**



We acknowledge that the land our university gathers on has long served as a site of meeting and exchange amongst a number of Indigenous peoples, historically the Shakori and Catawba (kúh-tá-há) people.

Today, North Carolina recognizes six tribes: the Coharie (ó-HAIR-ee), Eastern Band of Cherokee Indians, Haliwa-Saponi (HA-ah-WAH-ah-PON-ee), Meherrin (ma-HAIR-in), Occaneechi Band of the Saponi, Sappony, and Waccamaw Siouan (W-OK-ah-ma-SOO-ah). We recognize those peoples for whom there were ancestral lands as well as the many Indigenous people who live and work in the region today.

Note: This following acknowledgement was adapted from those of the Southern Association of Public and Higher Education and endorsed by the Native American Business Association.



31

---

---

---

---

---

---

---


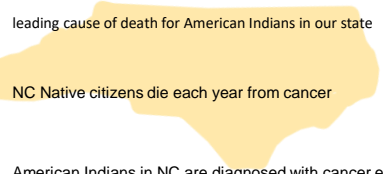
---

**In North Carolina:**

Cancer was the **2nd** leading cause of death for American Indians in our state

Approx. **200** NC Native citizens die each year from cancer

Approx. **400** American Indians in NC are diagnosed with cancer each year



32

---

---

---

---

---

---

---

---

**Which institutions are represented in the SAICEP partnership?**

Atrium Health Wake Forest Baptist  0%

Duke University  0%

University of North Carolina  0%

All of the above  0%

Start the presentation to see live content. For screen share software, share the entire screen. Get help at [pollen.com/help](https://pollen.com/help)



33

---

---

---

---

---

---

---

---

### SAICEP Goals:

- 1 To increase awareness of cancer health needs of American Indian populations
- 2 To expand access to cancer health education and build community capacity to address cancer health needs
- 3 To develop collaborative research and community relationships to better understand and address the cancer burden in American Indian communities



34

---

---

---

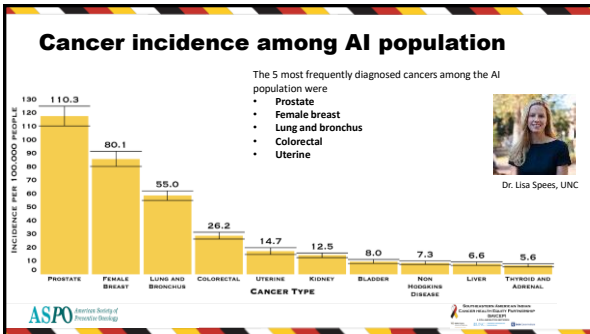
---

---

---

---

---



35

---

---

---

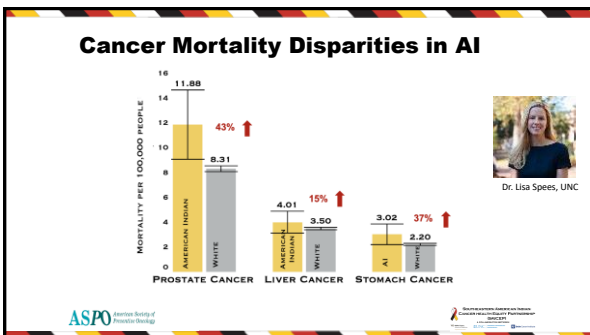
---

---

---

---

---



36

---

---

---

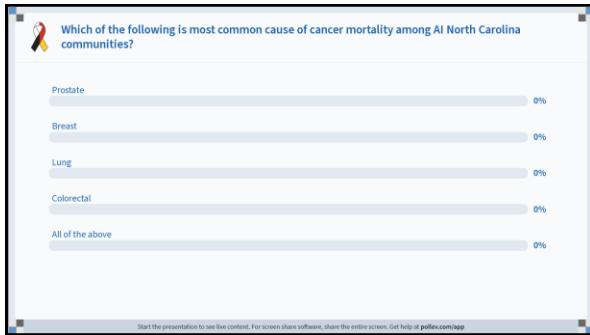
---

---

---

---

---



37

---

---

---

---

---

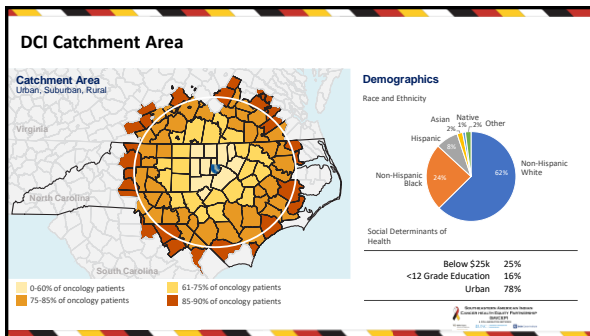
---

---

---

---

---



38

---

---

---

---

---

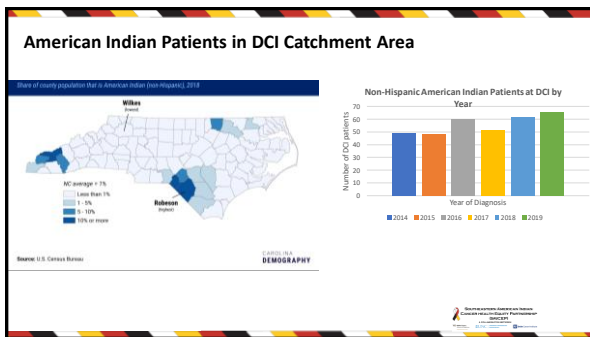
---

---

---

---

---



39

---

---

---

---

---

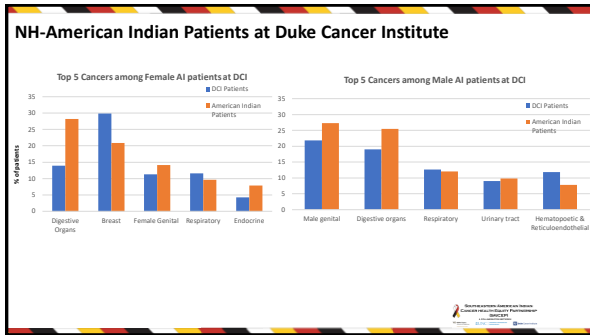
---

---

---

---

---



40

---

---

---

---

---

---

---

---

---

---

In a few words, what resources are available in your community to reduce the burden of cancer?

Nobody has responded yet.  
Hang tight! Responses are coming in.

Start the presentation to see live content. For screen share software, share the entire screen. Get help at [polls.com/app](https://polls.com/app)

41

---

---

---

---

---

---

---

---

---

---

 <b>Rachel Denlinger-Apts, PhD, MPH</b> Assistant Professor, Social Sciences and Health Policy Aron Health Wake Forest Baptist Comprehensive Cancer Center	 <b>Tom Akinyemi, PhD, MS</b> Associate Director, Community Outreach, Engagement and Equity Duke Cancer Institute	 <b>Ronny A. Bell, PhD, MS (Lumbee)</b> Senior Advisor, Community Outreach and Engagement UNC Lineberger Comprehensive Cancer Center	 <b>Stephanie B. Wheeler, PhD, MPH</b> Associate Director, Community Outreach and Engagement UNC Lineberger Comprehensive Cancer Center
---	--	---	--

42

---

---

---

---

---

---

---

---

---

---

**Aim 1**  
Assess regional variation in cancer incidence, prevalence, stage, and mortality for NC AI populations

**Aim 2**  
Assess cancer health information needs associated with cancer care through qualitative methods (e.g., talking circles) and survey with 3 AI communities (Lumbee, Coharie, Haliwa-Saponi)

**Aim 3**  
Conduct AI asset mapping to identify community strengths and resources available to support cancer health equity in partnership with tribes and AI youth leaders.

UNC Lineberger Cancer Network  
Cancer Health Equity Research  
2020-2024

43

---

---

---

---

---

---

---

---

---

---

### Approach

1. Qualitative and quantitative study of adults in 3 large AI communities in NC to explore cancer-related health needs
2. Building on collaborations from the Native Pathways to Health and Healing Walk project
3. Partner with tribal leaders, community members and AI facilitators to lead talking circle
4. Analyze the qualitative data to identify key themes and summarize for dissemination with tribal communities and others.
5. Develop survey questions to capture cancer-related health needs from a larger number of AI community members

UNC Lineberger Cancer Network  
Cancer Health Equity Research  
2020-2024

44

---

---

---

---

---

---

---

---

---

---

### Participating Tribes

**State and Federally Recognized Tribes**

- Cherokee (North and South)
- Eastern Band of Cherokee Indians (Cherokee, Clay, Graham, Jackson, Macon and Swain)
- Haliwa-Saponi (Hatteras and Warren)
- Lumbee (Robeson, Randolph and Surry)
- Mohican (Bladen, Northampton, Gates and Bertie)
- Occaneechi Band of the Saponi Nation (Gaston, Caswell and Orange)
- Savannah (Pamlico)
- Wetumpka (Bladen and Columbus)

**Urban Indian Organizations**  
(Hallywa members on the NC Commission of Indian Affairs)  
Catawba County Association for Indian People  
Catawba Indian Association (since 2005)  
Harrisville Native American Association  
Triangle Native American Society

Map published by the North Carolina Commission of Indian Affairs, 2020

Lumbee Tribe  
Coharie Tribe (Sampson and Harnett counties)  
Haliwa-Saponi Tribe

UNC Lineberger Cancer Network  
Cancer Health Equity Research  
2020-2024

45

---

---

---

---

---

---

---

---

---

---

**INTERESTED IN JOINING AN  
UPCOMING TALKING CIRCLE FOCUSED  
ON CANCER HEALTH NEEDS?**  
Get paid to share your voice to help researchers learn about  
cancer health in your community.



**Who is eligible?**

- Age 18+
- Identify as American Indian and Alaska Native or Alaska Natives or one of the following tribes:
  - Cherokee
  - Cherokee Tribe of North Carolina
  - Chillicothe
  - Eastern Band of Cherokee Indians
  - Chickasaw
  - Choctaw
- Speak English
- Willing to share your story about the cancer health needs in your tribal community

**What to expect:**

- Research and sharing session
- Approx. 2 hours in duration
- \$250 Visa amount incentive

**Please sign up by calling or emailing us:**  
Email: [66066@unc.edu](mailto:66066@unc.edu)  
Phone: 919-813-6112

**The Southeastern American Indian Cancer Health Equity Partnership (SE-ICHIEP)** is committed to better understand and address the cancer-related health needs of American Indian communities and improve cancer care. Since the SE-ICHIEP was formed to address cancer disparities, cancer health needs and issues in ITC tribal communities through American Indian and Alaska Natives.

**SOUTHEASTERN AMERICAN INDIAN CANCER HEALTH EQUITY PARTNERSHIP SE-ICHIEP**



46

---

---

---

---

---

---

---


---

---


---

**Talking Circles**


- Talking circles are traditional native practices that provide a safe and equal opportunity to share personal stories on a particular topic
- Led by Native Co-facilitators
- 10-12 participants per talking circle roughly 1.5 to 2 hours in duration



Mr. Tony Locklear



Ms. Vivette Jeffries-Logan



47

---

---

---

---

---

---

---

---

---

---



Coharie Talking Circle February 18<sup>th</sup> 2023, Coharie Tribal Center Clinton, NC



48

---

---

---

---

---

---

---

---

---

---



## Acknowledgements

- The DCI COEE Team would like to express our gratitude for the various tribal leaders, coordinators, and facilitators across the various tribal communities and institutions. We'd also like to thank our participants for supporting this work.
- This work is funded by the V Foundation, under the Victory Ride Collaborative Research Grant

Vivette-Jeffries Logan  
Tony Locklear  
Jasmine Sullivan  
Tabatha Brewer  
Greg Jacobs  
Jody Bullard

Chief Dr. Ogletree Richardson  
Marvin Richardson  
Qua Lynch Adkins  
UNC COEE Team  
Atrium Wake Forest COEE Team  
NCNAVO Program



49

---

---

---

---

---

---

---

---



## Questions/Comments?

Nobody has responded yet.  
Hang tight! Responses are coming in.

Start the presentation to see live content. For screen share software, share the entire screen. Get help at [polls.com/help](https://polls.com/help)

50

---

---

---

---

---

---

---

---

## Thank You . . .

### University Cancer Research Fund



## UNC Lineberger Cancer Network

### The Telehealth Team

<b>Veneranda Olvera</b> - Technology Support Specialist	<b>Tim Pee</b> - Host	<b>Andrew Dodgson, MD</b> - Oncology Educator Specialist
<b>Jon Powell, PhD</b> - Oncology Education Specialist		<b>Patrick Muscarella</b> - Technology Support Specialist
<b>Oliver Marth</b> - Technology Support Specialist		<b>Lindsay Reich, MA</b> - Public Communication Specialist
	<b>Barbara Walsh, MD, MPH, MEd, RN</b> - Nurse Planner	

The song *Back Rhodes* written and performed by **Don Pie**

51

---

---

---

---

---

---

---

---

**SOUTHEASTERN AMERICAN  
INDIAN CANCER HEALTH  
EQUITY PARTNERSHIP**

Visit our website

**www.saicep.org**

These networks are a collaboration between

Duke Cancer Institute | UNC | UNC Lineberger Cancer Center | UNC-Chapel Hill | UNC School of Medicine | UNC School of Public Health | UNC School of Life Sciences

52

---

---

---

---

---

---

---

---

### Self-Paced, Online SAICEP Courses [learn.unclcn.org/saicep](https://learn.unclcn.org/saicep)

- Catawba Indian Nation & Levine Cancer Institute:  
Partners in Healing**  
Daniel R. Carrizosa, MD, MAS | Mellisa Wheeler, BSN, MBA  
Darcy Doego, BSN, RN
- Partnership for Native American Cancer Prevention**  
Francine C. Gachupin, PhD, MPH
- Closing the Chasm Between Native Community Priorities in  
Cancer Prevention and Healthcare Research Priorities**  
Siobhan Wescott, MD, MPH

53

---

---

---

---

---

---

---

---

### We Thank You for Participating Today!

**UNC Lineberger Cancer Network**

Ask to sign up for our monthly e-newsletter

Email: [unclcn@unc.edu](mailto:unclcn@unc.edu)

Call: (919) 445-1000

Check us out at

[unclcn.org](https://unclcn.org) and [learn.unclcn.org](https://learn.unclcn.org)

Look for us on these social media platforms

[facebook.com/unclcn](https://facebook.com/unclcn) [unclcn.org](https://unclcn.org)

[linkedin.com/in/unclcn](https://linkedin.com/in/unclcn)

54

---

---

---

---

---

---

---

---