

PATIENT-CENTERED CARE

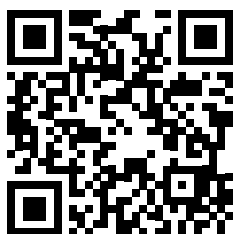


April 10

Wednesday

12:00 – 1:00 PM EST/EDT

learn.unclcn.org/04102024



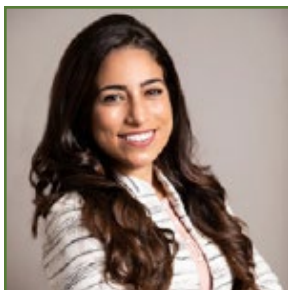
Available in one month

learn.unclcn.org/spoc



This program co-provided with **UNC Health**

Updates on Management of Early-Stage Breast Cancer



Yara Abdou, MD

Assistant Professor of Medicine

Division of Oncology

UNC Health - NC Cancer Hospital

UNC School of Medicine

University of North Carolina at Chapel Hill

WEBINAR DESCRIPTION

Yara Abdou, MD, will delve into various aspects of early breast cancer, covering an overview of the epidemiological landscape of early-stage breast cancer, current screening guidelines, various subtypes of breast cancer and an overview of latest treatment strategies early breast cancer. The webinar will conclude with a focus on post-treatment surveillance and follow-up care for early breast cancer survivors.

LEARNING OBJECTIVES

- Describe the epidemiology of breast cancer.
- Identify updated screening and surveillance guidelines.
- Discuss the latest treatment strategies for early-stage breast cancer based on subtype.

UNCLCN SITES

DISCLOSURE STATEMENT

UNCLCN Website

unclcn.org

UNCLCN Learning Portal

learn.unclcn.org

Upcoming Live Webinars

learn.unclcn.org/live

Activity Directors: This activity has been planned and implemented under the sole supervision of the Course Director, Stephanie Wheeler, PhD, MPH, in association with the UNC Office of Continuing Professional Development (CPD). The course director received research support from AstraZeneca (ended June 2023) and Pfizer Medical Foundation (ended December 2023). These financial relationships have been mitigated. CPD staff have no relevant financial relationships with ineligible companies as defined by the ACCME.
ACCME: The speaker receives consulting fees from AstraZeneca and Exact Sciences.
ANCC: No one with the ability to control content of this activity has a relevant financial relationship with an ineligible company.

ACCREDITATION

NCPD/CNE: UNC Health is approved as a provider of nursing continuing professional development by the North Carolina Nurses Association, an accredited approver by the American Nurses Credentialing Center's Commission on Accreditation. Criteria for successful completion requires attendance at the NCPD activity and submission of an evaluation within 30 days.

ACPE: The UNC Eshelman School of Pharmacy Postgraduate/Continuing Education (PGCE) Program provides accredited professional educational activities for pharmacists and pharmacy technicians. The Eshelman School of Pharmacy of the University of North Carolina at Chapel Hill designates this live activity for a maximum of 1.0 ACPE Credit(s).

ASRT: The American Registry of Radiologic Technologists (ARRT) is a leading credentialing organization that recognizes qualified individuals in medical imaging, interventional procedures, and radiation therapy. Approved by the ASRT for 1 Category A continuing education credit.

CME: The School of Medicine of the University of North Carolina at Chapel Hill is accredited by the Accreditation Council for Continuing Medical Education (ACCME) to provide continuing medical education for physicians. The School of Medicine of the University of North Carolina at Chapel Hill designates this live internet activity for a maximum of 1.0 AMA PRA Category 1 Credit(s)[™]. Physicians should claim only the credit commensurate with the extent of their participation in the activity.