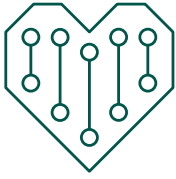


UNC Lineberger Cancer Network



Patient-Centered Care

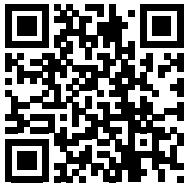


January 14

Wednesday

12:00 - 1:00 PM EST/EDT

learn.unclcn.org/01142026



Available in one month

learn.unclcn.org/spoc

UNCLCN SITES

UNCLCN Website go.unc.edu/unclcn

Learning Portal learn.unclcn.org

Live Webinars learn.unclcn.org/live

Inaccurate Cancer Claims



Alison Lazard, PhD

Associate Professor

Hussman School of Journalism and Media

UNC Lineberger Comprehensive Cancer Center

UNC School of Medicine

University of North Carolina at Chapel Hill

Webinar Description

To be announced

Learning Objectives

- To be announced

Disclosure Statements

Planners: This activity has been planned and implemented under the sole supervision of the Course Director, Stephanie Wheeler, PhD, MPH, Emily Ray, MD, of the UNC School of Medicine, and the planning committee in association with the UNC Office of Continuing Professional Development (CPD). Dr. Wheeler received research support from AstraZeneca (ended June 2023) and Pfizer Medical Foundation (ended December 2023). These financial relationships have been mitigated. Dr. Emily Ray has no relevant financial relationships with ineligible companies as defined by the ACCME. CPD staff have no relevant financial relationships with ineligible companies as defined by the ACCME. The planning committee members and their relevant financial relationships with ineligible companies as defined by the ACCME can be found at <https://learn.unclcn.org/content/unclcn-webinar-planning-committee>.

ACCME: The presenter(s) has (have) no relevant financial relationships with ineligible companies as defined by the ACCME.

ANCC: Except as defined above, no one with the ability to control content of this activity has a relevant financial relationship with an ineligible company.

Accreditation

NCPD/CNE: UNC Health is approved as a provider of nursing continuing professional development by the North Carolina Nurses Association, an accredited approver by the American Nurses Credentialing Center's Commission on Accreditation. Criteria for successful completion to claim CE Certificate requires attendance at the NCPD activity, and submission of an evaluation within 7 days.

ACPE: The UNC Eshelman School of Pharmacy Postgraduate/Continuing Education (PGCE) Program provides accredited professional educational activities for pharmacists and pharmacy technicians. The Eshelman School of Pharmacy of the University of North Carolina at Chapel Hill designates this live activity for a maximum of 1.0 ACPE Credit(s).

ASRT: The American Registry of Radiologic Technologists (ARRT) is a leading credentialing organization that recognizes qualified individuals in medical imaging, interventional procedures, and radiation therapy. This activity is worth 1 credit hour and is pending approval by the ASRT.

CME: The School of Medicine of the University of North Carolina at Chapel Hill is accredited by the Accreditation Council for Continuing Medical Education (ACCME) to provide continuing medical education for physicians. The School of Medicine of the University of North Carolina at Chapel Hill designates this live internet activity for a maximum of 1.0 AMA PRA Category 1 Credit(s)[™]. Physicians should claim only the credit commensurate with the extent of their participation in the activity.