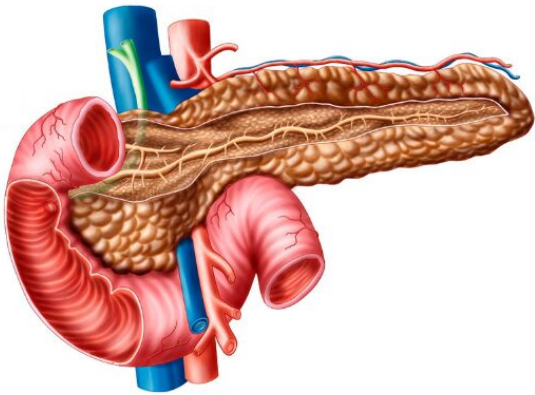


DIAGNOSIS

Our team of experts at UNC Health Cancer Care conducts physical exams, diagnostic imaging, and biopsies to find patients' tumors. If any are malignant, we assign a stage of cancer and assess the extent of their disease to develop the most effective treatment plan.



Stage	Tumor Location
1	Only in pancreas
2	In pancreas and nearby lymph nodes
3	In pancreas and large blood vessels
4	In pancreas and other organs/tissues



Scan QR code
to view clinical trials



984-974-0000

Monday - Friday 8 a.m. - 5 p.m.



UNCPANCREAS@MED.UNC.EDU



NATIONAL PANCREAS FOUNDATION
CENTERS OF EXCELLENCE

Pancreatic Cancer

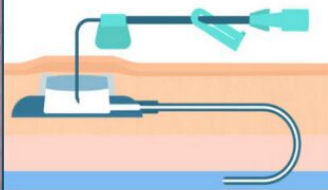
UNC
HEALTH

TREATMENT

The most effective methods we have to treat pancreatic cancer are surgery, chemotherapy and radiation therapy.

If tumors can be safely removed with surgery, we do so through traditional or minimally invasive procedures. For any tumors that cannot be removed, we use chemotherapy and/or radiation to shrink them and kill cancerous cells that have spread beyond the pancreas.

Implantable Venous Access Port



Before surgery or radiation, we might implant a port into the patient's chest to administer chemo. Ports are used for long-term IV access, so you don't need a new IV for each chemotherapy session.

After primary treatment, more chemo might be needed to remove remaining cancer cells and reduce risk of relapse.

Can we prevent weight loss and fatigue?

Unfortunately, these side effects are natural. They can cause stress, especially in caregivers.

We try to adjust treatment to limit fatigue, and although we cannot prevent weight loss, medication can improve appetite.

What about pain?

Pain can be treated with opiates, Tylenol, radiation therapy and, in rare cases, surgery or a nerve block. We use every tool we have to ensure patients are as comfortable as possible.

Does chemo have other side effects?

Diarrhea, nausea, and numbness/tingling in the hands/feet can be treated with medicine, as can vomiting, which is highly uncommon.

What about radiation?

Upset stomach/nausea are possible, and skin can redden/blister at sites receiving radiation. These are all treatable with medicine.

How long does surgery recovery take?

It depends on the procedure. Tumors in the head/neck of the pancreas often need more extensive surgery and longer recovery (6-9 months) than those in the body (2-3 months).

Are there risks associated with ports?

Infection and blood clots are uncommon. Implant site might be sore shortly afterward, although rarely for more than a few days.

Do patients stay overnight for chemotherapy?

No, chemo is done in our clinic and patients can return home with a caretaker the same day.

CLINICAL TRIALS

We rely on clinical trials to help find the best, most effective ways to treat cancer, and we hope our patients can benefit from innovative therapies and treatment solutions. We encourage patients to enroll in clinical trials to help us develop new treatment strategies that are safe and effective.



Each trial focuses on a specific stage and severity of cancer and has its own eligibility requirements. To learn if you are eligible for any clinical trials held at UNC Hospitals in Chapel Hill, please scan the QR code on the back.

We understand the hardship patients and their loved ones go through, and we appreciate your commitment to helping every patient with pancreatic cancer experience the best possible care.